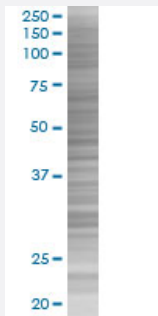


SNTB2 293T Cell Transient Overexpression Lysate(Denatured)

Catalog # H00006645-T01

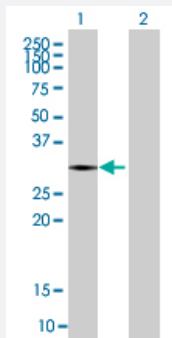
Size 100 uL

Applications



SDS-PAGE Gel

SNTB2 transfected lysate.



Western Blot

Lane 1: SNTB2 transfected lysate (29.48 KDa)

Lane 2: Non-transfected lysate.

Specification

Transfected Cell Line	293T
Plasmid	pCMV-SNTB2 full-length
Host	Human
Theoretical MW (kDa)	29.48
Interspecies Antigen Sequence	Mouse (94); Rat (92)

Quality Control Testing

Transient overexpression cell lysate was tested with Anti-SNTB2 antibody ([H00006645-B01](#)) by Western Blots.
 SDS-PAGE Gel
 SNTB2 transfected lysate.
 Western Blot
 Lane 1: SNTB2 transfected lysate (29.48 KDa)
 Lane 2: Non-transfected lysate.

Storage Buffer

1X Sample Buffer (50 mM Tris-HCl, 2% SDS, 10% glycerol, 300 mM 2-mercaptoethanol, 0.01% Bromophenol blue)

Storage Instruction

Store at -80°C. Aliquot to avoid repeated freezing and thawing.

Applications

- Western Blot

Gene Info — SNTB2

Entrez GeneID

[6645](#)

GeneBank Accession#

[ENST00000360496](#)

Protein Accession#

-

Gene Name

SNTB2

Gene Alias

D16S2531E, EST25263, SNT2B2, SNT3, SNTL

Gene Description

syntrophin, beta 2 (dystrophin-associated protein A1, 59kDa, basic component 2)

Omim ID

[600027](#)

Gene Ontology

[Hyperlink](#)

Gene Summary

Dystrophin is a large, rod-like cytoskeletal protein found at the inner surface of muscle fibers. Dystrophin is missing in Duchenne Muscular Dystrophy patients and is present in reduced amounts in Becker Muscular Dystrophy patients. The protein encoded by this gene is a peripheral membrane protein found associated with dystrophin and dystrophin-related proteins. This gene is a member of the syntrophin gene family, which contains at least two other structurally-related genes. [provided by RefSeq]

Other Designations

basic beta 2 syntrophin|dystrophin-associated protein A1, 59kD, basic component 2|syntrophin, beta 2 (dystrophin-associated protein A1, 59kD, basic component 2)|syntrophin-like