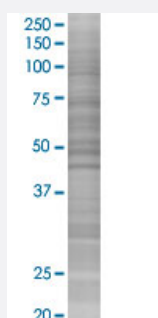


# SNRPB 293T Cell Transient Overexpression Lysate(Denatured)

Catalog # H00006628-T02

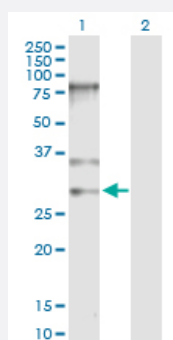
Size 100 uL

## Applications



### SDS-PAGE Gel

SNRPB transfected lysate.



### Western Blot

Lane 1: SNRPB transfected lysate ( 24.60 KDa)

Lane 2: Non-transfected lysate.

## Specification

Transfected Cell Line	293T
Plasmid	pCMV-SNRPB full-length
Host	Human
Theoretical MW (kDa)	24.6
Interspecies Antigen Sequence	Mouse (99); Rat (100)

#### Quality Control Testing

Transient overexpression cell lysate was tested with Anti-SNRPB antibody ([H00006628-D01P](#)) by Western Blots.  
 SDS-PAGE Gel  
 SNRPB transfected lysate.  
 Western Blot  
 Lane 1: SNRPB transfected lysate ( 24.60 KDa)  
 Lane 2: Non-transfected lysate.

#### Storage Buffer

1X Sample Buffer (50 mM Tris-HCl, 2% SDS, 10% glycerol, 300 mM 2-mercaptoethanol, 0.01% Bromophenol blue)

#### Storage Instruction

Store at -80°C. Aliquot to avoid repeated freezing and thawing.

## Applications

- Western Blot

## Gene Info — SNRPB

#### Entrez GeneID

[6628](#)

#### GeneBank Accession#

[NM\\_198216.1](#)

#### Protein Accession#

[NP\\_937859.1](#)

#### Gene Name

SNRPB

#### Gene Alias

COD, SNRPB1, SmB/SmB', snRNP-B

#### Gene Description

small nuclear ribonucleoprotein polypeptides B and B1

#### Omim ID

[182282](#)

#### Gene Ontology

[Hyperlink](#)

#### Gene Summary

The protein encoded by this gene is one of several nuclear proteins that are found in common among U1, U2, U4/U6, and U5 small ribonucleoprotein particles (snRNPs). These snRNPs are involved in pre-mRNA splicing, and the encoded protein may also play a role in pre-mRNA splicing or snRNP structure. Autoantibodies from patients with systemic lupus erythematosus frequently recognize epitopes on the encoded protein. Two transcript variants encoding different isoforms (B and B') have been found for this gene. [provided by RefSeq]

#### Other Designations

B polypeptide of Sm protein|OTTHUMP00000030012|OTTHUMP00000030013|Sm protein B/B'|small nuclear ribonucleoprotein polypeptide B|small nuclear ribonucleoprotein polypeptide B/B'|small nuclear ribonucleoprotein polypeptides B and B'

## Pathway

- [Systemic lupus erythematosus](#)

## Disease

- [Breast Neoplasms](#)
- [Carcinoma](#)
- [Genetic Predisposition to Disease](#)