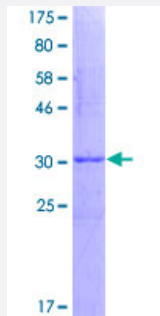


SNRPB (Human) Recombinant Protein (Q01)

Catalog # H00006628-Q01

Size 10 ug, 25 ug

Applications



Specification

Product Description	Human SNRPB partial ORF (NP_003082, 1 a.a. - 80 a.a.) recombinant protein with GST-tag at N-terminal.
Sequence	MTVGKSSKMLQHIDYRMRCILQDGRIFIGTFKAFDKHMNLILCDCDEFKIKPKNSKQAEREEKRVLGLVLLRGENLVSM
Host	Wheat Germ (in vitro)
Theoretical MW (kDa)	34.54
Interspecies Antigen Sequence	Mouse (100); Rat (100)
Preparation Method	in vitro wheat germ expression system
Purification	Glutathione Sepharose 4 Fast Flow
Quality Control Testing	12.5% SDS-PAGE Stained with Coomassie Blue.
Storage Buffer	50 mM Tris-HCl, 10 mM reduced Glutathione, pH=8.0 in the elution buffer.
Storage Instruction	Store at -80°C. Aliquot to avoid repeated freezing and thawing.
Note	Best use within three months from the date of receipt of this protein.

Applications

- Enzyme-linked Immunoabsorbent Assay
- Western Blot (Recombinant protein)
- Antibody Production
- Protein Array

Gene Info — SNRPB

Entrez GeneID [6628](#)

GeneBank Accession# [NM_003091](#)

Protein Accession# [NP_003082](#)

Gene Name SNRPB

Gene Alias COD, SNRPB1, SmB/SmB', snRNP-B

Gene Description small nuclear ribonucleoprotein polypeptides B and B1

Omim ID [182282](#)

Gene Ontology [Hyperlink](#)

Gene Summary The protein encoded by this gene is one of several nuclear proteins that are found in common among U1, U2, U4/U6, and U5 small ribonucleoprotein particles (snRNPs). These snRNPs are involved in pre-mRNA splicing, and the encoded protein may also play a role in pre-mRNA splicing or snRNP structure. Autoantibodies from patients with systemic lupus erythematosus frequently recognize epitopes on the encoded protein. Two transcript variants encoding different isoforms (B and B') have been found for this gene. [provided by RefSeq]

Other Designations B polypeptide of Sm protein|OTTHUMP00000030012|OTTHUMP00000030013|Sm protein B/B'|small nuclear ribonucleoprotein polypeptide B|small nuclear ribonucleoprotein polypeptide B/B'|small nuclear ribonucleoprotein polypeptides B and B'

Pathway

- [Systemic lupus erythematosus](#)

Disease

- [Breast Neoplasms](#)
- [Carcinoma](#)
- [Genetic Predisposition to Disease](#)