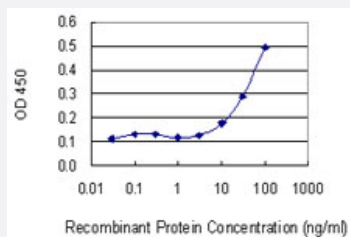


SNRPB monoclonal antibody (M01), clone 1B4

Catalog # H00006628-M01

Size 100 ug

Applications



Sandwich ELISA (Recombinant protein)

Detection limit for recombinant GST tagged SNRPB is 3 ng/ml as a capture antibody.

Specification

Product Description	Mouse monoclonal antibody raised against a partial recombinant SNRPB.
Immunogen	SNRPB (NP_003082, 1 a.a. ~ 80 a.a) partial recombinant protein with GST tag. MW of the GST tag alone is 26 KDa.
Sequence	MTVGKSSKMLQHIDYRMRCILQDGRIFGTGKAFDKHMLILCDCDEFKIKPKNSKQAEREKRVL GLVLLRGENLVSM
Host	Mouse
Reactivity	Human
Interspecies Antigen Sequence	Mouse (100); Rat (100)
Isotype	IgG1 Kappa
Quality Control Testing	Antibody Reactive Against Recombinant Protein.
Storage Buffer	In 1x PBS, pH 7.4
Storage Instruction	Store at -20°C or lower. Aliquot to avoid repeated freezing and thawing.

Applications

- Sandwich ELISA (Recombinant protein)

Detection limit for recombinant GST tagged SNRPB is 3 ng/ml as a capture antibody.

[Protocol Download](#)

- ELISA

Gene Info — SNRPB

Entrez GeneID [6628](#)

GeneBank Accession# [NM_003091](#)

Protein Accession# [NP_003082](#)

Gene Name SNRPB

Gene Alias COD, SNRPB1, SmB/SmB', snRNP-B

Gene Description small nuclear ribonucleoprotein polypeptides B and B1

Omim ID [182282](#)

Gene Ontology [Hyperlink](#)

Gene Summary The protein encoded by this gene is one of several nuclear proteins that are found in common among U1, U2, U4/U6, and U5 small ribonucleoprotein particles (snRNPs). These snRNPs are involved in pre-mRNA splicing, and the encoded protein may also play a role in pre-mRNA splicing or snRNP structure. Autoantibodies from patients with systemic lupus erythematosus frequently recognize epitopes on the encoded protein. Two transcript variants encoding different isoforms (B and B') have been found for this gene. [provided by RefSeq]

Other Designations B polypeptide of Sm protein|OTTHUMP00000030012|OTTHUMP00000030013|Sm protein B/B'|small nuclear ribonucleoprotein polypeptide B|small nuclear ribonucleoprotein polypeptide B/B'|small nuclear ribonucleoprotein polypeptides B and B'

Pathway

- [Systemic lupus erythematosus](#)

Disease

- [Breast Neoplasms](#)
- [Carcinoma](#)
- [Genetic Predisposition to Disease](#)