

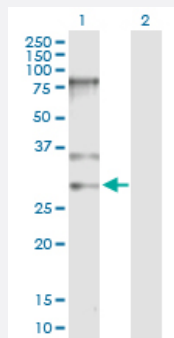
MaxPab®

SNRPB purified MaxPab rabbit polyclonal antibody (D01P)

Catalog # H00006628-D01P

Size 100 ug

Applications

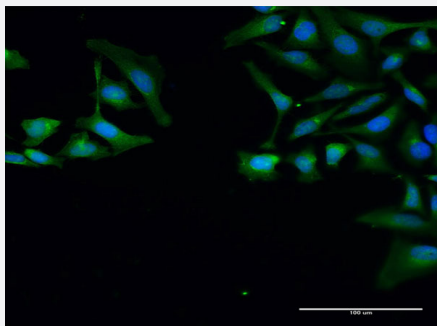


Western Blot (Transfected lysate)

Western Blot analysis of SNRPB expression in transfected 293T cell line ([H00006628-T02](#)) by SNRPB MaxPab polyclonal antibody.

Lane 1: SNRPB transfected lysate(24.60 KDa).

Lane 2: Non-transfected lysate.



Immunofluorescence

Immunofluorescence of purified MaxPab antibody to SNRPB on HeLa cell. [antibody concentration 30 ug/ml]

Specification

Product Description	Rabbit polyclonal antibody raised against a full-length human SNRPB protein.
Immunogen	SNRPB (NP_937859.1, 1 a.a. ~ 240 a.a) full-length human protein.
Sequence	MTVGKSSKMLQHIDYRMRCLQDGRIFIGTFKAFDKHMNLILCDCDEFKIKPKNSKQAEREEKRVL GLVLLRGENLVSMTEVGPPPKDTGIARVPLAGAAGGPGIGRAAGRGIPAGVPMPQAPAGLAGPV RGVGGPSQQVMT PQGRGTVA AAAAAAATASIAGAPTQYPPGRGGPPPPMGRGAPPPGMMGPPP GMRPPMGPPMGIPGRGT PMGMPPPGMRPPPGMRGPPPPGMRPPRP
Host	Rabbit
Reactivity	Human

Interspecies Antigen Sequence	Mouse (99); Rat (100)
Quality Control Testing	Antibody reactive against mammalian transfected lysate.
Storage Buffer	In 1x PBS, pH 7.4
Storage Instruction	Store at -20°C or lower. Aliquot to avoid repeated freezing and thawing.

Applications

- Western Blot (Transfected lysate)

Western Blot analysis of SNRPB expression in transfected 293T cell line ([H00006628-T02](#)) by SNRPB MaxPab polyclonal antibody.

Lane 1: SNRPB transfected lysate(24.60 KDa).

Lane 2: Non-transfected lysate.

[Protocol Download](#)

- Immunofluorescence

Immunofluorescence of purified MaxPab antibody to SNRPB on HeLa cell. [antibody concentration 30 ug/ml]

Gene Info — SNRPB

Entrez GeneID	6628
GeneBank Accession#	NM_198216.1
Protein Accession#	NP_937859.1
Gene Name	SNRPB
Gene Alias	COD, SNRPB1, SmB/SmB', snRNP-B
Gene Description	small nuclear ribonucleoprotein polypeptides B and B1
Omim ID	182282
Gene Ontology	Hyperlink

Gene Summary

The protein encoded by this gene is one of several nuclear proteins that are found in common among U1, U2, U4/U6, and U5 small ribonucleoprotein particles (snRNPs). These snRNPs are involved in pre-mRNA splicing, and the encoded protein may also play a role in pre-mRNA splicing or snRNP structure. Autoantibodies from patients with systemic lupus erythematosus frequently recognize epitopes on the encoded protein. Two transcript variants encoding different isoforms (B and B') have been found for this gene. [provided by RefSeq]

Other Designations

B polypeptide of Sm protein|OTTHUMP00000030012|OTTHUMP00000030013|Sm protein B/B'|small nuclear ribonucleoprotein polypeptide B|small nuclear ribonucleoprotein polypeptide B/B'|small nuclear ribonucleoprotein polypeptides B and B'

Pathway

- [Systemic lupus erythematosus](#)

Disease

- [Breast Neoplasms](#)
- [Carcinoma](#)
- [Genetic Predisposition to Disease](#)