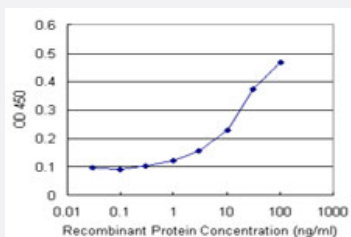


SNRPA (Human) Matched Antibody Pair

Catalog # H00006626-AP11

Size 1 Set

Applications



Sandwich ELISA detection sensitivity ranging from 3 ng/ml to 100 ng/ml.

Specification

Product Description	This antibody pair set comes with a matched antibody pair to detect and quantify the protein level of human SNRPA.
Reactivity	Human
Quality Control Testing	Standard curve using recombinant protein (H00006626-P01) as an analyte. Sandwich ELISA detection sensitivity ranging from 3 ng/ml to 100 ng/ml.
Supplied Product	Antibody pair set content: 1. Capture antibody: rabbit MaxPab® affinity purified polyclonal anti-SNRPA (100 ug) 2. Detection antibody: mouse monoclonal anti-SNRPA, IgG1 Kappa (20 ug) *Reagents are sufficient for at least 1-2 x 96 well plates using recommended protocols.
Storage Instruction	Store reagents of the antibody pair set at -20°C or lower. Please aliquot to avoid repeated freeze thaw cycle. Reagents should be returned to -20°C storage immediately after use.

Applications

- ELISA Pair (Recombinant protein)

[Protocol Download](#)

Gene Info — SNRPA

Entrez GeneID	6626
Gene Name	SNRPA
Gene Alias	U1A
Gene Description	small nuclear ribonucleoprotein polypeptide A
Omim ID	182285
Gene Ontology	Hyperlink
Other Designations	-