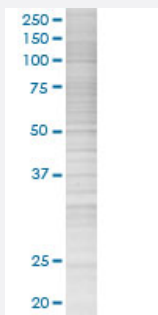


# SNCG 293T Cell Transient Overexpression Lysate(Denatured)

Catalog # H00006623-T01

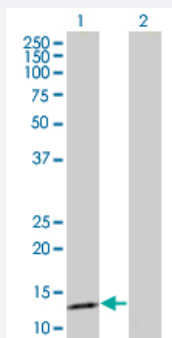
Size 100 uL

## Applications



### SDS-PAGE Gel

SNCG transfected lysate.



### Western Blot

Lane 1: SNCG transfected lysate ( 14.08 KDa)

Lane 2: Non-transfected lysate.

## Specification

**Transfected Cell Line** 293T

**Plasmid** pCMV-SNCG full-length

**Host** Human

**Theoretical MW (kDa)** 14.08

**Quality Control Testing** Transient overexpression cell lysate was tested with Anti-SNCG antibody ([H00006623-B01](#)) by Western Blots.  
SDS-PAGE Gel  
SNCG transfected lysate.  
Western Blot  
Lane 1: SNCG transfected lysate ( 14.08 KDa)  
Lane 2: Non-transfected lysate.

Storage Buffer	1X Sample Buffer (50 mM Tris-HCl, 2% SDS, 10% glycerol, 300 mM 2-mercaptoethanol, 0.01% Bromophenol blue)
Storage Instruction	Store at -80°C. Aliquot to avoid repeated freezing and thawing.

## Applications

- Western Blot

## Gene Info — SNCG

Entrez GeneID	<a href="#">6623</a>
GeneBank Accession#	<a href="#">BC014098.2</a>
Protein Accession#	-
Gene Name	SNCG
Gene Alias	BCSG1, SR
Gene Description	synuclein, gamma (breast cancer-specific protein 1)
Omim ID	<a href="#">602998</a>
Gene Ontology	<a href="#">Hyperlink</a>
Gene Summary	Summary: This gene encodes a member of the synuclein family of proteins which are believed to be involved in the pathogenesis of neurodegenerative diseases. Mutations in this gene have also been associated with breast tumor development. [provided by RefSeq]
Other Designations	OTTHUMP00000020013 breast cancer-specific protein 1 persyn synoretin synuclein, gamma (breast cancer-specific gene 1)

## Disease

- [Alzheimer disease](#)
- [Parkinson disease](#)