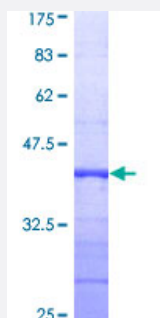


# SNCG (Human) Recombinant Protein (Q01)

Catalog # H00006623-Q01

Size 25 ug, 10 ug

## Applications



## Specification

<b>Product Description</b>	Human SNCG partial ORF ( AAH14098, 21 a.a. - 127 a.a.) recombinant protein with GST-tag at N-terminal.
<b>Sequence</b>	KTKQGVTEAAEKTKEGVMY/GAKTKENVVQSVTSVAEKTKEQANAVSEAVVSSVNTVATKTVEE AENIAVTSGVVRKEDLRPSAPQQEGEASKEKEEVAEEAQSGGD
<b>Host</b>	Wheat Germ (in vitro)
<b>Theoretical MW (kDa)</b>	37.40
<b>Preparation Method</b>	<a href="#">in vitro wheat germ expression system</a>
<b>Purification</b>	Glutathione Sepharose 4 Fast Flow
<b>Quality Control Testing</b>	12.5% SDS-PAGE Stained with Coomassie Blue.
<b>Storage Buffer</b>	50 mM Tris-HCl, 10 mM reduced Glutathione, pH=8.0 in the elution buffer.
<b>Storage Instruction</b>	Store at -80°C. Aliquot to avoid repeated freezing and thawing.
<b>Note</b>	Best use within three months from the date of receipt of this protein.

## Applications

- Enzyme-linked Immunoabsorbent Assay
- Western Blot (Recombinant protein)
- Antibody Production
- Protein Array

## Gene Info — SNCG

Entrez GeneID	<a href="#">6623</a>
GeneBank Accession#	<a href="#">BC014098</a>
Protein Accession#	<a href="#">AAH14098</a>
Gene Name	SNCG
Gene Alias	BCSG1, SR
Gene Description	synuclein, gamma (breast cancer-specific protein 1)
Omim ID	<a href="#">602998</a>
Gene Ontology	<a href="#">Hyperlink</a>
Gene Summary	Summary: This gene encodes a member of the synuclein family of proteins which are believed to be involved in the pathogenesis of neurodegenerative diseases. Mutations in this gene have also been associated with breast tumor development. [provided by RefSeq]
Other Designations	OTTHUMP00000020013 breast cancer-specific protein 1 persyn synoretin synuclein, gamma (breast cancer-specific gene 1)

## Disease

- [Alzheimer disease](#)
- [Parkinson disease](#)