

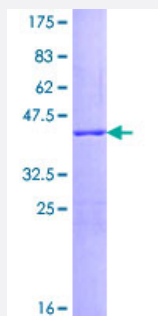
Full-Length

SNCG (Human) Recombinant Protein (P01)

Catalog # H00006623-P01

Size 25 ug, 10 ug

Applications



Specification

Product Description	Human SNCG full-length ORF (AAH14098.1, 1 a.a. - 127 a.a.) recombinant protein with GST-tag at N-terminal.
Sequence	MDVFKKGFSIAKEGVVGAVEKTKQGVTAAEKTKEGVMYGAKTKENVVQSVTSVAEKTKEQA NAVSEAVVSSVNTVATKTVEEAENIAVTSGVVRKEDLRPSAPQQEGEASKEKEEVAEEAQSGG D
Host	Wheat Germ (in vitro)
Theoretical MW (kDa)	39.7
Preparation Method	in vitro wheat germ expression system
Purification	Glutathione Sepharose 4 Fast Flow
Quality Control Testing	12.5% SDS-PAGE Stained with Coomassie Blue.
Storage Buffer	50 mM Tris-HCl, 10 mM reduced Glutathione, pH=8.0 in the elution buffer.
Storage Instruction	Store at -80°C. Aliquot to avoid repeated freezing and thawing.
Note	Best use within three months from the date of receipt of this protein.

Applications

- Enzyme-linked Immunoabsorbent Assay
- Western Blot (Recombinant protein)
- Antibody Production
- Protein Array

Gene Info — SNCG

Entrez GeneID	6623
GeneBank Accession#	BC014098.2
Protein Accession#	AAH14098.1
Gene Name	SNCG
Gene Alias	BCSG1, SR
Gene Description	synuclein, gamma (breast cancer-specific protein 1)
Omim ID	602998
Gene Ontology	Hyperlink
Gene Summary	Summary: This gene encodes a member of the synuclein family of proteins which are believed to be involved in the pathogenesis of neurodegenerative diseases. Mutations in this gene have also been associated with breast tumor development. [provided by RefSeq]
Other Designations	OTTHUMP00000020013 breast cancer-specific protein 1 persyn synoretin synuclein, gamma (breast cancer-specific gene 1)

Disease

- [Alzheimer disease](#)
- [Parkinson disease](#)