

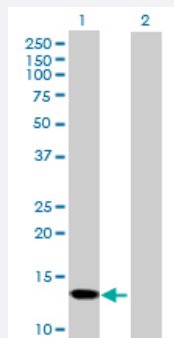
MaxPab®

SNCG purified MaxPab mouse polyclonal antibody (B01P)

Catalog # H00006623-B01P

Size 50 ug

Applications



Western Blot (Transfected lysate)

Western Blot analysis of SNCG expression in transfected 293T cell line ([H00006623-T01](#)) by SNCG MaxPab polyclonal antibody.

Lane 1: SNCG transfected lysate(13.97 KDa).

Lane 2: Non-transfected lysate.

Specification

Product Description	Mouse polyclonal antibody raised against a full-length human SNCG protein.
Immunogen	SNCG (AAH14098.1, 1 a.a. ~ 127 a.a) full-length human protein.
Sequence	MDVFKKGFSIAKEGVVGAVEKTKQGVTEAAEKTKEGVMYVGAKTKENVVQSVTSVAEKTKEQA NAVSEAVVSSVNTVATKTVEEAENIAVTSGVVRKEDLRPSAPQQEGEASKEKEEVAEEAQSGG D
Host	Mouse
Reactivity	Human
Quality Control Testing	Antibody reactive against mammalian transfected lysate.
Storage Buffer	In 1x PBS, pH 7.4
Storage Instruction	Store at -20°C or lower. Aliquot to avoid repeated freezing and thawing.

Applications

- Western Blot (Transfected lysate)

Western Blot analysis of SNCG expression in transfected 293T cell line ([H00006623-T01](#)) by SNCG MaxPab polyclonal antibody.

Lane 1: SNCG transfected lysate(13.97 KDa).

Lane 2: Non-transfected lysate.

[Protocol Download](#)

Gene Info — SNCG

Entrez GeneID [6623](#)

GeneBank Accession# [BC014098.2](#)

Protein Accession# [AAH14098.1](#)

Gene Name SNCG

Gene Alias BCSG1, SR

Gene Description synuclein, gamma (breast cancer-specific protein 1)

Omim ID [602998](#)

Gene Ontology [Hyperlink](#)

Gene Summary Summary: This gene encodes a member of the synuclein family of proteins which are believed to be involved in the pathogenesis of neurodegenerative diseases. Mutations in this gene have also been associated with breast tumor development. [provided by RefSeq]

Other Designations OTTHUMP00000020013|breast cancer-specific protein 1|persyn|synoretin|synuclein, gamma (breast cancer-specific gene 1)

Disease

- [Alzheimer disease](#)
- [Parkinson disease](#)