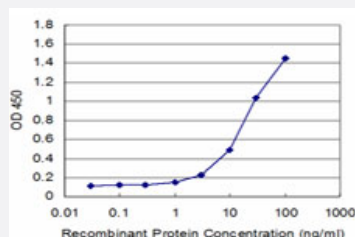


SNCB monoclonal antibody (M16), clone 4F11

Catalog # H00006620-M16

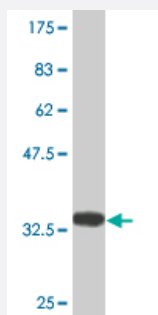
Size 100 ug

Applications



Sandwich ELISA (Recombinant protein)

Detection limit for recombinant GST tagged SNCB is approximately 1ng/ml as a capture antibody.



Western Blot detection against Immunogen (32.89 KDa) .

Specification

Product Description

Mouse monoclonal antibody raised against a partial recombinant SNCB.

Immunogen

SNCB (NP_001001502.1, 1 a.a. ~ 65 a.a) partial recombinant protein with GST tag. MW of the GST tag alone is 26 KDa.

Sequence

MDVFMKGLSMAKEGVVAAAETKQGVTEAAETKEGVLYVGSKTREGVVQGVASVAEKTKEQ
ASH

Host

Mouse

Reactivity

Human

Isotype

IgG2a Kappa

Quality Control Testing

Antibody Reactive Against Recombinant Protein.
Western Blot detection against Immunogen (32.89 KDa) .

Storage Buffer

In 1x PBS, pH 7.4

Storage Instruction

Store at -20°C or lower. Aliquot to avoid repeated freezing and thawing.

Applications

- Western Blot (Recombinant protein)

[Protocol Download](#)

- Sandwich ELISA (Recombinant protein)

Detection limit for recombinant GST tagged SNCB is approximately 1ng/ml as a capture antibody.

[Protocol Download](#)

- ELISA

Gene Info — SNCB

Entrez GeneID

[6620](#)

GeneBank Accession#

[NM_001001502](#)

Protein Accession#

[NP_001001502.1](#)

Gene Name

SNCB

Gene Alias

-

Gene Description

synuclein, beta

Omim ID

[127750 602569](#)

Gene Ontology

[Hyperlink](#)

Other Designations

beta-synuclein

Disease

- [Parkinson disease](#)