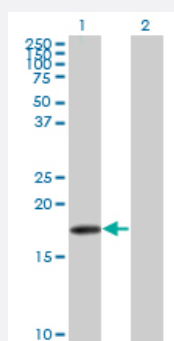


SNCB monoclonal antibody (M07), clone 3H4

Catalog # H00006620-M07

Size 100 ug

Applications

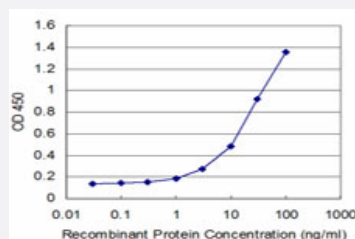


Western Blot (Transfected lysate)

Western Blot analysis of SNCB expression in transfected 293T cell line by SNCB monoclonal antibody (M07), clone 3H4.

Lane 1: SNCB transfected lysate (14.3 KDa).

Lane 2: Non-transfected lysate.



Sandwich ELISA (Recombinant protein)

Detection limit for recombinant GST tagged SNCB is approximately 1ng/ml as a capture antibody.



Western Blot detection against Immunogen (40.48 KDa) .

Specification

Product Description

Mouse monoclonal antibody raised against a full-length recombinant SNCB.

Immunogen	SNCB (AAH02902, 1 a.a. ~ 134 a.a) full-length recombinant protein with GST tag. MW of the GST tag alone is 26 KDa.
Sequence	MDVFMKGLSMAKEGVVAAAEKTKQGVTEAAEKTKEGVLVVGSKTREGVVQGVASVAEKTKEQ ASHLGGAVFSGAGNIAAATGLVKREEFPTDLKPEEVAQEAAEEPLIEPLMEPEGESYEDPPQEEY QEYEPEA
Host	Mouse
Reactivity	Human
Isotype	IgG2a Kappa
Quality Control Testing	Antibody Reactive Against Recombinant Protein. Western Blot detection against Immunogen (40.48 KDa) .
Storage Buffer	In 1x PBS, pH 7.4
Storage Instruction	Store at -20°C or lower. Aliquot to avoid repeated freezing and thawing.

Applications

- Western Blot (Transfected lysate)

Western Blot analysis of SNCB expression in transfected 293T cell line by SNCB monoclonal antibody (M07), clone 3H4.

Lane 1: SNCB transfected lysate(14.3 KDa).

Lane 2: Non-transfected lysate.

[Protocol Download](#)

- Western Blot (Recombinant protein)

[Protocol Download](#)

- Sandwich ELISA (Recombinant protein)

Detection limit for recombinant GST tagged SNCB is approximately 1ng/ml as a capture antibody.

[Protocol Download](#)

- ELISA

Gene Info — SNCB

Entrez GeneID

[6620](#)

GeneBank Accession#	BC002902
Protein Accession#	AAH02902
Gene Name	SNCB
Gene Alias	-
Gene Description	synuclein, beta
Omim ID	127750 602569
Gene Ontology	Hyperlink
Other Designations	beta-synuclein

Disease

- [Parkinson disease](#)