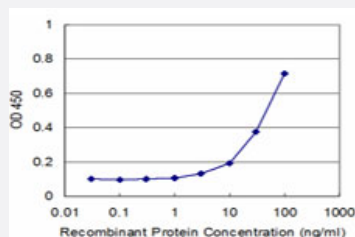


# SNCB monoclonal antibody (M02), clone 3G6

Catalog # H00006620-M02

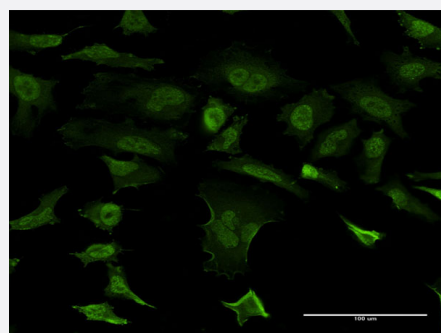
Size 100 ug

## Applications



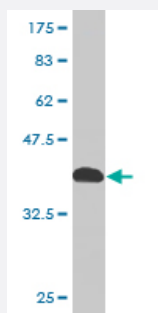
### Sandwich ELISA (Recombinant protein)

Detection limit for recombinant GST tagged SNCB is approximately 3ng/ml as a capture antibody.



### Immunofluorescence

Immunofluorescence of monoclonal antibody to SNCB on HeLa cell . [antibody concentration 10 ug/ml]



Western Blot detection against Immunogen (40.48 KDa) .

## Specification

### Product Description

Mouse monoclonal antibody raised against a full-length recombinant SNCB.

<b>Immunogen</b>	SNCB (AAH02902, 1 a.a. ~ 134 a.a) full-length recombinant protein with GST tag. MW of the GST tag alone is 26 KDa.
<b>Sequence</b>	MDVFMKGLSMAKEGVVAAAETKQGVTEAAETKEGVLYVGSKTREGVVQGVASVAEKTKEQ ASHLGGAVFSGAGNAAATGLVKREEFPDLDKPEEVAQEAAEEPLIEPLMEPEGESYEDPPQEEY QEYEPEA
<b>Host</b>	Mouse
<b>Reactivity</b>	Human
<b>Isotype</b>	IgG2a Kappa
<b>Quality Control Testing</b>	Antibody Reactive Against Recombinant Protein. Western Blot detection against Immunogen (40.48 KDa) .
<b>Storage Buffer</b>	In 1x PBS, pH 7.4
<b>Storage Instruction</b>	Store at -20°C or lower. Aliquot to avoid repeated freezing and thawing.

## Applications

- Western Blot (Recombinant protein)

[Protocol Download](#)

- Sandwich ELISA (Recombinant protein)

Detection limit for recombinant GST tagged SNCB is approximately 3ng/ml as a capture antibody.

[Protocol Download](#)

- ELISA

- Immunofluorescence

Immunofluorescence of monoclonal antibody to SNCB on HeLa cell . [antibody concentration 10 ug/ml]

## Gene Info — SNCB

<b>Entrez GeneID</b>	<a href="#">6620</a>
<b>GeneBank Accession#</b>	<a href="#">BC002902</a>
<b>Protein Accession#</b>	<a href="#">AAH02902</a>

Gene Name	SNCB
Gene Alias	-
Gene Description	synuclein, beta
Omim ID	<a href="#">127750 602569</a>
Gene Ontology	<a href="#">Hyperlink</a>
Other Designations	beta-synuclein

## Disease

- [Parkinson disease](#)