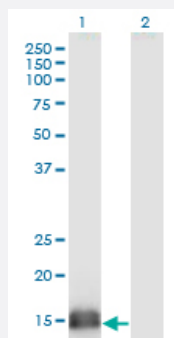


# SUMO2 monoclonal antibody (M06), clone 2H8

Catalog # H00006613-M06

Size 100 ug

## Applications

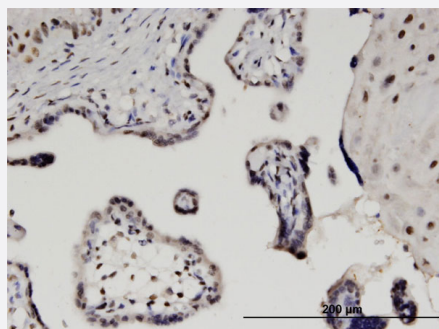


### Western Blot (Transfected lysate)

Western Blot analysis of SUMO2 expression in transfected 293T cell line by SUMO2 monoclonal antibody (M06), clone 2H8.

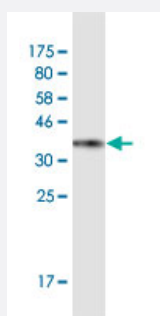
Lane 1: SUMO2 transfected lysate(10.9 KDa).

Lane 2: Non-transfected lysate.



### Immunohistochemistry (Formalin/PFA-fixed paraffin-embedded sections)

Immunoperoxidase of monoclonal antibody to SUMO2 on formalin-fixed paraffin-embedded human placenta. [antibody concentration 1.5 ug/ml]



Western Blot detection against Immunogen (36.19 KDa) .

## Specification

### Product Description

Mouse monoclonal antibody raised against a full-length recombinant SUMO2.

<b>Immunogen</b>	SUMO2 (AAH08450, 1 a.a. ~ 95 a.a) full-length recombinant protein with GST tag. MW of the GST tag alone is 26 KDa.
<b>Sequence</b>	MADEKPKEGVKTENNNHINLKVAGQDGSVVQFKIKRHTPLSKLMKAYCERQGLSMRQIRFRFDG QPINETDTPAQLEMEDEDITIDVFQQQTGGVY
<b>Host</b>	Mouse
<b>Reactivity</b>	Human
<b>Isotype</b>	IgG1 Kappa
<b>Quality Control Testing</b>	Antibody Reactive Against Recombinant Protein. Western Blot detection against Immunogen (36.19 KDa) .
<b>Storage Buffer</b>	In 1x PBS, pH 7.4
<b>Storage Instruction</b>	Store at -20°C or lower. Aliquot to avoid repeated freezing and thawing.

## Applications

- Western Blot (Transfected lysate)

Western Blot analysis of SUMO2 expression in transfected 293T cell line by SUMO2 monoclonal antibody (M06), clone 2H8.

Lane 1: SUMO2 transfected lysate(10.9 KDa).

Lane 2: Non-transfected lysate.

[Protocol Download](#)

- Western Blot (Recombinant protein)

[Protocol Download](#)

- Immunohistochemistry (Formalin/PFA-fixed paraffin-embedded sections)

Immunoperoxidase of monoclonal antibody to SUMO2 on formalin-fixed paraffin-embedded human placenta. [antibody concentration 1.5 ug/ml]

[Protocol Download](#)

- ELISA

## Gene Info — SUMO2

Entrez GeneID [6613](#)

GeneBank Accession#	<a href="#">BC008450</a>
Protein Accession#	<a href="#">AAH08450</a>
Gene Name	SUMO2
Gene Alias	HSMT3, MGC117191, SMT3B, SMT3H2
Gene Description	SMT3 suppressor of mif two 3 homolog 2 (S. cerevisiae)
Omim ID	<a href="#">603042</a>
Gene Ontology	<a href="#">Hyperlink</a>
Gene Summary	<p>This gene encodes a protein that is a member of the SUMO (small ubiquitin-like modifier) protein family. It functions in a manner similar to ubiquitin in that it is bound to target proteins as part of a post-translational modification system. However, unlike ubiquitin which targets proteins for degradation, this protein is involved in a variety of cellular processes, such as nuclear transport, transcriptional regulation, apoptosis, and protein stability. It is not active until the last two amino acids of the carboxy-terminus have been cleaved off. Numerous pseudogenes have been reported for this gene. Alternate transcriptional splice variants, encoding different isoforms, have been characterized. [provided by RefSeq]</p>
Other Designations	SMT3 suppressor of mif two 3 homolog 2 sentrin 2 small ubiquitin-like modifier 2, isoform a