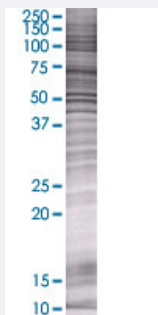


# SMARCE1 293T Cell Transient Overexpression Lysate(Denatured)

Catalog # H00006605-T01

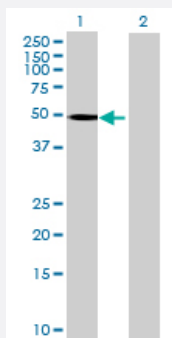
Size 100 uL

## Applications



### SDS-PAGE Gel

SMARCE1 transfected lysate.



### Western Blot

Lane 1: SMARCE1 transfected lysate ( 45.32 KDa)

Lane 2: Non-transfected lysate.

## Specification

**Transfected Cell Line** 293T

**Plasmid** pCMV-SMARCE1 full-length

**Host** Human

**Theoretical MW (kDa)** 45.32

**Quality Control Testing** Transient overexpression cell lysate was tested with Anti-SMARCE1 antibody ([H00006605-B01](#)) by Western Blots.  
SDS-PAGE Gel  
SMARCE1 transfected lysate.  
Western Blot  
Lane 1: SMARCE1 transfected lysate ( 45.32 KDa)  
Lane 2: Non-transfected lysate.

Storage Buffer	1X Sample Buffer (50 mM Tris-HCl, 2% SDS, 10% glycerol, 300 mM 2-mercaptoethanol, 0.01% Bromophenol blue)
Storage Instruction	Store at -80°C. Aliquot to avoid repeated freezing and thawing.

## Applications

- Western Blot

## Gene Info — SMARCE1

Entrez GeneID	<a href="#">6605</a>
GeneBank Accession#	<a href="#">BC007082.1</a>
Protein Accession#	<a href="#">AAH07082.1</a>
Gene Name	SMARCE1
Gene Alias	BAF57
Gene Description	SWI/SNF related, matrix associated, actin dependent regulator of chromatin, subfamily e, member 1
Omim ID	<a href="#">603111</a>
Gene Ontology	<a href="#">Hyperlink</a>

Gene Summary	The protein encoded by this gene is part of the large ATP-dependent chromatin remodeling complex SWI/SNF, which is required for transcriptional activation of genes normally repressed by chromatin. The encoded protein, either alone or when in the SWI/SNF complex, can bind to 4-way junction DNA, which is thought to mimic the topology of DNA as it enters or exits the nucleosome. The protein contains a DNA-binding HMG domain, but disruption of this domain does not abolish the DNA-binding or nucleosome-displacement activities of the SWI/SNF complex. Unlike most of the SWI/SNF complex proteins, this protein has no yeast counterpart. [provided by RefSeq]
--------------	---

Other Designations	SWI/SNF-related matrix-associated actin-dependent regulator of chromatin e1 mammalian chromatin remodeling complex BRG1-associated factor 57
--------------------	--

## Disease

- [Asthma](#)