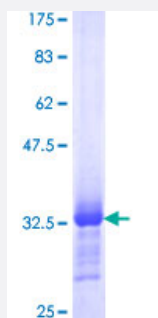


SMARCE1 (Human) Recombinant Protein (Q01)

Catalog # H00006605-Q01

Size 25 ug, 10 ug

Applications



Specification

Product Description	Human SMARCE1 partial ORF (NP_003070, 75 a.a. - 142 a.a.) recombinant protein with GST-tag at N-terminal.
Sequence	RYSRKVWDQVKASNPDLKLWEIGKIIGGMWRDLTDEEKQEYLN EYEA EKIEYNESMKAYHNSPAY LAY
Host	Wheat Germ (in vitro)
Theoretical MW (kDa)	33.22
Preparation Method	in vitro wheat germ expression system
Purification	Glutathione Sepharose 4 Fast Flow
Quality Control Testing	12.5% SDS-PAGE Stained with Coomassie Blue.
Storage Buffer	50 mM Tris-HCl, 10 mM reduced Glutathione, pH=8.0 in the elution buffer.
Storage Instruction	Store at -80°C. Aliquot to avoid repeated freezing and thawing.
Note	Best use within three months from the date of receipt of this protein.

Applications

- Enzyme-linked Immunoabsorbent Assay
- Western Blot (Recombinant protein)
- Antibody Production
- Protein Array

Gene Info — SMARCE1

Entrez GeneID	6605
GeneBank Accession#	NM_003079
Protein Accession#	NP_003070
Gene Name	SMARCE1
Gene Alias	BAF57
Gene Description	SWI/SNF related, matrix associated, actin dependent regulator of chromatin, subfamily e, member 1
Omim ID	603111
Gene Ontology	Hyperlink
Gene Summary	The protein encoded by this gene is part of the large ATP-dependent chromatin remodeling complex SWI/SNF, which is required for transcriptional activation of genes normally repressed by chromatin. The encoded protein, either alone or when in the SWI/SNF complex, can bind to 4-way junction DNA, which is thought to mimic the topology of DNA as it enters or exits the nucleosome. The protein contains a DNA-binding HMG domain, but disruption of this domain does not abolish the DNA-binding or nucleosome-displacement activities of the SWI/SNF complex. Unlike most of the SWI/SNF complex proteins, this protein has no yeast counterpart. [provided by RefSeq]
Other Designations	SWI/SNF-related matrix-associated actin-dependent regulator of chromatin e1 mammalian chromatin remodeling complex BRG1-associated factor 57

Disease

- [Asthma](#)