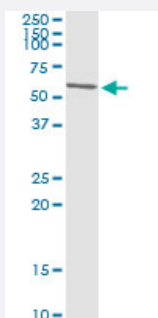


SMARCE1 (Human) IP-WB Antibody Pair

Catalog # H00006605-PW1

Size 1 Set

Applications



Immunoprecipitation of SMARCE1 transfected lysate using mouse monoclonal anti-SMARCE1 and Protein A Magnetic Bead ([U0007](#)), and immunoblotted with rabbit polyclonal anti-SMARCE1.

Specification

Product Description	This IP-WB antibody pair set comes with one antibody for immunoprecipitation and another to detect the precipitated protein in western blot.
Reactivity	Human
Quality Control Testing	Immunoprecipitation-Western Blot (IP-WB) Immunoprecipitation of SMARCE1 transfected lysate using mouse monoclonal anti-SMARCE1 and Protein A Magnetic Bead (U0007), and immunoblotted with rabbit polyclonal anti-SMARCE1.
Supplied Product	Antibody pair set content: 1. Antibody pair for IP: mouse monoclonal anti-SMARCE1 (300 ug) 2. Antibody pair for WB: rabbit polyclonal anti-SMARCE1 (50 ul)
Storage Instruction	Store reagents of the antibody pair set at -20°C or lower. Please aliquot to avoid repeated freeze thaw cycle. Reagents should be returned to -20°C storage immediately after use.

Applications

- Immunoprecipitation-Western Blot

[Protocol Download](#)

Gene Info — SMARCE1

Entrez GeneID	6605
Gene Name	SMARCE1
Gene Alias	BAF57
Gene Description	SWI/SNF related, matrix associated, actin dependent regulator of chromatin, subfamily e, member 1
Omim ID	603111
Gene Ontology	Hyperlink
Gene Summary	<p>The protein encoded by this gene is part of the large ATP-dependent chromatin remodeling complex SWI/SNF, which is required for transcriptional activation of genes normally repressed by chromatin. The encoded protein, either alone or when in the SWI/SNF complex, can bind to 4-way junction DNA, which is thought to mimic the topology of DNA as it enters or exits the nucleosome. The protein contains a DNA-binding HMG domain, but disruption of this domain does not abolish the DNA-binding or nucleosome-displacement activities of the SWI/SNF complex. Unlike most of the SWI/SNF complex proteins, this protein has no yeast counterpart. [provided by RefSeq]</p>
Other Designations	SWI/SNF-related matrix-associated actin-dependent regulator of chromatin e1 mammalian chromatin remodeling complex BRG1-associated factor 57

Disease

- [Asthma](#)