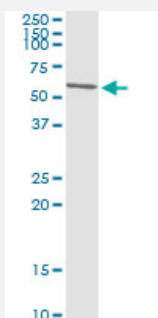


SMARCE1 monoclonal antibody (M01), clone 6G11

Catalog # H00006605-M01

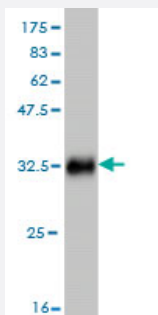
Size 100 ug

Applications



Immunoprecipitation

Immunoprecipitation of SMARCE1 transfected lysate using anti-SMARCE1 monoclonal antibody and Protein A Magnetic Bead, and immunoblotted with SMARCE1 MaxPab rabbit polyclonal antibody.



Western Blot detection against Immunogen (33.22 KDa) .

Specification

Product Description

Mouse monoclonal antibody raised against a partial recombinant SMARCE1.

Immunogen

SMARCE1 (NP_003070, 75 a.a. ~ 142 a.a) partial recombinant protein with GST tag. MW of the GST tag alone is 26 KDa.

Sequence

RYSRKVWDQVKASNPDLKLWEIGKIIGGMWRDLTDEEKQEYLN EYEA EKIEYNESMKAYHNSPAY LAY

Host

Mouse

Reactivity

Human

Isotype

IgG1 Kappa

Quality Control Testing

Antibody Reactive Against Recombinant Protein.
Western Blot detection against Immunogen (33.22 KDa) .

Storage Buffer

In 1x PBS, pH 7.4

Storage Instruction

Store at -20°C or lower. Aliquot to avoid repeated freezing and thawing.

Applications

- Western Blot (Recombinant protein)

[Protocol Download](#)

- Immunoprecipitation

Immunoprecipitation of SMARCE1 transfected lysate using anti-SMARCE1 monoclonal antibody and Protein A Magnetic Bead, and immunoblotted with SMARCE1 MaxPab rabbit polyclonal antibody.

[Protocol Download](#)

- ELISA

Gene Info — SMARCE1

Entrez GeneID

[6605](#)

GeneBank Accession#

[NM_003079](#)

Protein Accession#

[NP_003070](#)

Gene Name

SMARCE1

Gene Alias

BAF57

Gene Description

SWI/SNF related, matrix associated, actin dependent regulator of chromatin, subfamily e, member 1

Omim ID

[603111](#)

Gene Ontology

[Hyperlink](#)

Gene Summary

The protein encoded by this gene is part of the large ATP-dependent chromatin remodeling complex SWI/SNF, which is required for transcriptional activation of genes normally repressed by chromatin. The encoded protein, either alone or when in the SWI/SNF complex, can bind to 4-way junction DNA, which is thought to mimic the topology of DNA as it enters or exits the nucleosome. The protein contains a DNA-binding HMG domain, but disruption of this domain does not abolish the DNA-binding or nucleosome-displacement activities of the SWI/SNF complex. Unlike most of the SWI/SNF complex proteins, this protein has no yeast counterpart. [provided by RefSeq]

Other Designations

SWI/SNF-related matrix-associated actin-dependent regulator of chromatin e1|mammalian chromatin remodeling complex BRG1-associated factor 57

Disease

- [Asthma](#)