

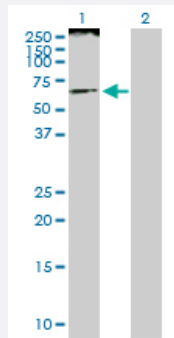
MaxPab®

SMARCE1 purified MaxPab rabbit polyclonal antibody (D01P)

Catalog # H00006605-D01P

Size 100 ug

Applications



Western Blot (Transfected lysate)

Western Blot analysis of SMARCE1 expression in transfected 293T cell line ([H00006605-T02](#)) by SMARCE1 MaxPab polyclonal antibody.

Lane 1: SMARCE1 transfected lysate(46.70 kDa).

Lane 2: Non-transfected lysate.

Specification

| | |
|-------------------------|---|
| Product Description | Rabbit polyclonal antibody raised against a full-length human SMARCE1 protein. |
| Immunogen | SMARCE1 (AAH07082.1, 1 a.a. ~ 411 a.a) full-length human protein. |
| Sequence | MSKRPSYAPPPTPAPATQMPSTPGFVGYNPYSHLAYNNYRLGGNPSTNSRVTASSGITIPKPPKP PDKPLMPYMRYSRKVWDQVKASNPDLKLWEIGKIIGGMWRDLTDEEKQEYLN EYEA EKIEYNESM KAYHNSPAYLAYINAKSRAEAALEEE SRQRQSRMEKGEPYMSIQPAEDPDDYDDGFSMKHTATA RFQRNHLRISEILSESVVPDVRVVT TARMQVLKRQVQSLMVHQRKLEAELLQIEERHQEKKRKFL ESTDSFNNE LKRLCGLKVEVDM EKIAAEIAQAE EQARKRQEEREKEAAEQAERSQSSIVPEEEQ AANKGEEKKDDENIPMETEETHLEETTESQQNGEEGTSTPEDKESGQEGVDSMAEEGTSDSNT GSESNSATVEEPPTDPIPEDEKKE |
| Host | Rabbit |
| Reactivity | Human |
| Quality Control Testing | Antibody reactive against mammalian transfected lysate. |
| Storage Buffer | In 1x PBS, pH 7.4 |
| Storage Instruction | Store at -20°C or lower. Aliquot to avoid repeated freezing and thawing. |

Applications

- Western Blot (Transfected lysate)

Western Blot analysis of SMARCE1 expression in transfected 293T cell line ([H00006605-T02](#)) by SMARCE1 MaxPab polyclonal antibody.

Lane 1: SMARCE1 transfected lysate(46.70 KDa).

Lane 2: Non-transfected lysate.

[Protocol Download](#)

Gene Info — SMARCE1

| | |
|---------------------|---|
| Entrez GeneID | 6605 |
| GeneBank Accession# | BC007082.1 |
| Protein Accession# | AAH07082.1 |
| Gene Name | SMARCE1 |
| Gene Alias | BAF57 |
| Gene Description | SWI/SNF related, matrix associated, actin dependent regulator of chromatin, subfamily e, member 1 |
| Omim ID | 603111 |
| Gene Ontology | Hyperlink |
| Gene Summary | The protein encoded by this gene is part of the large ATP-dependent chromatin remodeling complex SWI/SNF, which is required for transcriptional activation of genes normally repressed by chromatin. The encoded protein, either alone or when in the SWI/SNF complex, can bind to 4-way junction DNA, which is thought to mimic the topology of DNA as it enters or exits the nucleosome. The protein contains a DNA-binding HMG domain, but disruption of this domain does not abolish the DNA-binding or nucleosome-displacement activities of the SWI/SNF complex. Unlike most of the SWI/SNF complex proteins, this protein has no yeast counterpart. [provided by RefSeq] |
| Other Designations | SWI/SNF-related matrix-associated actin-dependent regulator of chromatin e1 mammalian chromatin remodeling complex BRG1-associated factor 57 |

Disease

- [Asthma](#)