

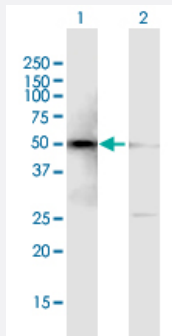
MaxPab®

# SMARCE1 purified MaxPab mouse polyclonal antibody (B01P)

Catalog # H00006605-B01P

Size 50 ug

## Applications

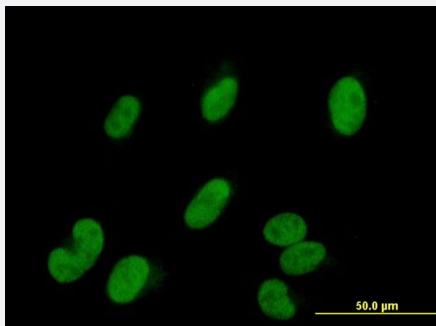


### Western Blot (Transfected lysate)

Western Blot analysis of SMARCE1 expression in transfected 293T cell line ([H00006605-T01](#)) by SMARCE1 MaxPab polyclonal antibody.

Lane 1: SMARCE1 transfected lysate(45.21 KDa).

Lane 2: Non-transfected lysate.



### Immunofluorescence

Immunofluorescence of purified MaxPab antibody to SMARCE1 on HepG2 cell. [antibody concentration 10 ug/ml]

## Specification

### Product Description

Mouse polyclonal antibody raised against a full-length human SMARCE1 protein.

### Immunogen

SMARCE1 (AAH07082.1, 1 a.a. ~ 411 a.a) full-length human protein.

### Sequence

MSKRPSYAPPPTAPATQMPSTPGFVGYNPYSHLAYNNYRLGGNPSTNSRVTASSGITIPKPPKP  
PDKPLMPYMRYSRKVWDQVKASNPDLKLWEIGKIIGGMWRDLTDEEKQEYLYNEYAEKIEYNESM  
KAYHNSPAYLAYINAKSRAEAALEEEESRQRQSRMEKGEPYMSIQPAEDPDDYDDGFSMKHTATA  
RFQRNHLRISEILSESVVPDVRVVTARMQVLKRQVQSLMVHQRKLEAELLQIEERHQEKRRKFL  
ESTDSFNNELKRLCGLKVEVDMEKIAAEIAQAEQARKRQEEREKEAAEQAERSQSSNPPEEQ  
AANKGEEKKDDENIPMETEETHLEETTESQQNGEETSTPEDKESGQEGVDSMAEEGTSDSNT  
GSESNSATVEEPPTDPIPEDEKKE

Host	Mouse
Reactivity	Human
Quality Control Testing	Antibody reactive against mammalian transfected lysate.
Storage Buffer	In 1x PBS, pH 7.4
Storage Instruction	Store at -20°C or lower. Aliquot to avoid repeated freezing and thawing.

## Applications

- Western Blot (Transfected lysate)

Western Blot analysis of SMARCE1 expression in transfected 293T cell line ([H00006605-T01](#)) by SMARCE1 MaxPab polyclonal antibody.

Lane 1: SMARCE1 transfected lysate(45.21 KDa).

Lane 2: Non-transfected lysate.

[Protocol Download](#)

- Immunofluorescence

Immunofluorescence of purified MaxPab antibody to SMARCE1 on HepG2 cell. [antibody concentration 10 ug/ml]

## Gene Info — SMARCE1

Entrez GeneID	<a href="#">6605</a>
GeneBank Accession#	<a href="#">BC007082.1</a>
Protein Accession#	<a href="#">AAH07082.1</a>
Gene Name	SMARCE1
Gene Alias	BAF57
Gene Description	SWI/SNF related, matrix associated, actin dependent regulator of chromatin, subfamily e, member 1
Omim ID	<a href="#">603111</a>
Gene Ontology	<a href="#">Hyperlink</a>

**Gene Summary**

The protein encoded by this gene is part of the large ATP-dependent chromatin remodeling complex SWI/SNF, which is required for transcriptional activation of genes normally repressed by chromatin. The encoded protein, either alone or when in the SWI/SNF complex, can bind to 4-way junction DNA, which is thought to mimic the topology of DNA as it enters or exits the nucleosome. The protein contains a DNA-binding HMG domain, but disruption of this domain does not abolish the DNA-binding or nucleosome-displacement activities of the SWI/SNF complex. Unlike most of the SWI/SNF complex proteins, this protein has no yeast counterpart. [provided by RefSeq]

**Other Designations**

SWI/SNF-related matrix-associated actin-dependent regulator of chromatin e1|mammalian chromatin remodeling complex BRG1-associated factor 57

**Disease**

- [Asthma](#)