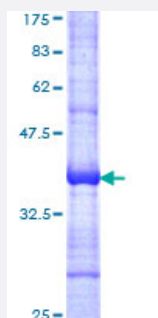


# SMARCD3 (Human) Recombinant Protein (Q01)

Catalog # H00006604-Q01

Size 25 ug, 10 ug

## Applications



## Specification

<b>Product Description</b>	Human SMARCD3 partial ORF ( NP_001003801, 385 a.a. - 483 a.a.) recombinant protein with GST-tag at N-terminal.
<b>Sequence</b>	ISALDSKIHETIESINQLKIQRDFMLSFSRDPKGYVQDLLRSQSRDLKVM TDVAGNPEEERRAEFYH QPWSQEAVSRYFYCKIQRRQELEQSLVVRNT
<b>Host</b>	Wheat Germ (in vitro)
<b>Theoretical MW (kDa)</b>	36.63
<b>Interspecies Antigen Sequence</b>	Mouse (100); Rat (100)
<b>Preparation Method</b>	<a href="#">in vitro wheat germ expression system</a>
<b>Purification</b>	Glutathione Sepharose 4 Fast Flow
<b>Quality Control Testing</b>	12.5% SDS-PAGE Stained with Coomassie Blue.
<b>Storage Buffer</b>	50 mM Tris-HCl, 10 mM reduced Glutathione, pH=8.0 in the elution buffer.
<b>Storage Instruction</b>	Store at -80°C. Aliquot to avoid repeated freezing and thawing.
<b>Note</b>	Best use within three months from the date of receipt of this protein.

## Applications

- Enzyme-linked Immunoabsorbent Assay
- Western Blot (Recombinant protein)
- Antibody Production
- Protein Array

## Gene Info — SMARCD3

Entrez GeneID	<a href="#">6604</a>
GeneBank Accession#	<a href="#">NM_001003801</a>
Protein Accession#	<a href="#">NP_001003801</a>
Gene Name	SMARCD3
Gene Alias	BAF60C, CRACD3, MGC111010, Rsc6p
Gene Description	SWI/SNF related, matrix associated, actin dependent regulator of chromatin, subfamily d, member 3
Omim ID	<a href="#">601737</a>
Gene Ontology	<a href="#">Hyperlink</a>
Gene Summary	The protein encoded by this gene is a member of the SWI/SNF family of proteins, whose members display helicase and ATPase activities and which are thought to regulate transcription of certain genes by altering the chromatin structure around those genes. The encoded protein is part of the large ATP-dependent chromatin remodeling complex SNF/SWI and has sequence similarity to the yeast Swp73 protein. Multiple alternatively spliced transcript variants have been found for this gene, but the biological validity of some variants has not been determined. [provided by RefSeq]
Other Designations	60kDa BRG-1/Brm associated factor subunit c SWI/SNF complex 60 kDa subunit C SWI/SNF related, matrix associated, actin dependent regulator of chromatin, subfamily d, member 3, isoform 1 Swp73-like protein chromatin remodeling complex BAF60C subunit mammal