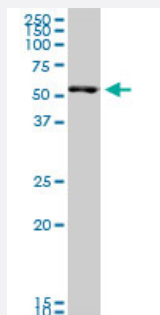


SMARCD3 monoclonal antibody (M04), clone 5B6

Catalog # H00006604-M04

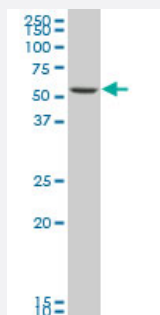
Size 100 ug

Applications



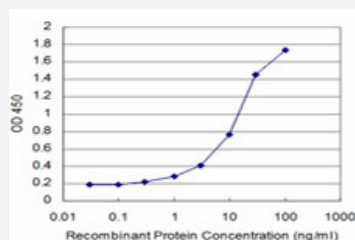
Western Blot (Cell lysate)

SMARCD3 monoclonal antibody (M04), clone 5B6. Western Blot analysis of SMARCD3 expression in PC-12(Cat # L012V1).



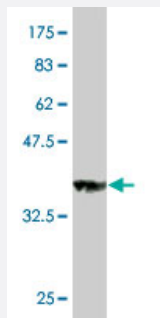
Western Blot (Cell lysate)

SMARCD3 monoclonal antibody (M04), clone 5B6 Western Blot analysis of SMARCD3 expression in NIH/3T3(Cat # L018V1).



Sandwich ELISA (Recombinant protein)

Detection limit for recombinant GST tagged SMARCD3 is approximately 0.3ng/ml as a capture antibody.



Western Blot detection against Immunogen (36.63 KDa) .

Specification

Product Description	Mouse monoclonal antibody raised against a partial recombinant SMARCD3.
Immunogen	SMARCD3 (NP_001003801, 385 a.a. ~ 483 a.a) partial recombinant protein with GST tag. MW of the GST tag alone is 26 KDa.
Sequence	ISALDSKIHETIESINQLKIQRDFMLSFSDPKGYVDLLRSQSRDLKVMTDVAGNPEEEERRAEFYH QPWSQEAVSRYFYCKIQRRQELEQSLVVRNT
Host	Mouse
Reactivity	Human, Mouse, Rat
Interspecies Antigen Sequence	Mouse (100); Rat (100)
Isotype	IgG2a Kappa
Quality Control Testing	Antibody Reactive Against Recombinant Protein. Western Blot detection against Immunogen (36.63 KDa) .
Storage Buffer	In 1x PBS, pH 7.4
Storage Instruction	Store at -20°C or lower. Aliquot to avoid repeated freezing and thawing.

Applications

- Western Blot (Cell lysate)

SMARCD3 monoclonal antibody (M04), clone 5B6. Western Blot analysis of SMARCD3 expression in PC-12(Cat # L012V1).

[Protocol Download](#)

- Western Blot (Cell lysate)

SMARCD3 monoclonal antibody (M04), clone 5B6 Western Blot analysis of SMARCD3 expression in NIH/3T3(Cat # L018V1).

[Protocol Download](#)

- Western Blot (Recombinant protein)

[Protocol Download](#)

- Sandwich ELISA (Recombinant protein)

Detection limit for recombinant GST tagged SMARCD3 is approximately 0.3ng/ml as a capture antibody.

[Protocol Download](#)

- ELISA

Gene Info — SMARCD3

Entrez GeneID [6604](#)

GeneBank Accession# [NM_001003801](#)

Protein Accession# [NP_001003801](#)

Gene Name SMARCD3

Gene Alias BAF60C, CRACD3, MGC111010, Rsc6p

Gene Description SWI/SNF related, matrix associated, actin dependent regulator of chromatin, subfamily d, member 3

Omim ID [601737](#)

Gene Ontology [Hyperlink](#)

Gene Summary The protein encoded by this gene is a member of the SWI/SNF family of proteins, whose members display helicase and ATPase activities and which are thought to regulate transcription of certain genes by altering the chromatin structure around those genes. The encoded protein is part of the large ATP-dependent chromatin remodeling complex SNF/SWI and has sequence similarity to the yeast Swp73 protein. Multiple alternatively spliced transcript variants have been found for this gene, but the biological validity of some variants has not been determined. [provided by RefSeq]

Other Designations 60kDa BRG-1/Brm associated factor subunit c|SWI/SNF complex 60 kDa subunit C|SWI/SNF related, matrix associated, actin dependent regulator of chromatin, subfamily d, member 3, isoform 1|Swp73-like protein|chromatin remodeling complex BAF60C subunit|mammal