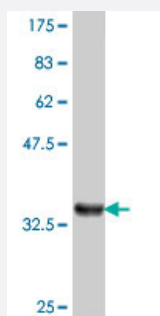


SMARCD3 polyclonal antibody (A01)

Catalog # H00006604-A01

Size 50 uL

Applications



Western Blot detection against Immunogen (37 KDa) .

Specification

Product Description	Mouse polyclonal antibody raised against a partial recombinant SMARCD3.
Immunogen	SMARCD3 (NP_001003801, 385 a.a. ~ 483 a.a) partial recombinant protein with GST tag.
Sequence	ISALDSKIHETIESINQLKIQRDFMLSFSRDPKGYVQDLLRSQSRDLKVMTDVAGNPEEEERRAEFYH QPWSQEAVSRYFYCKIQRRQELEQSLVVRNT
Host	Mouse
Reactivity	Human
Interspecies Antigen Sequence	Mouse (100); Rat (100)
Quality Control Testing	Antibody Reactive Against Recombinant Protein. Western Blot detection against Immunogen (37 KDa) .
Storage Buffer	50 % glycerol
Storage Instruction	Store at -20°C or lower. Aliquot to avoid repeated freezing and thawing.

Applications

- Western Blot (Recombinant protein)

[Protocol Download](#)

- ELISA

Gene Info — SMARCD3

Entrez GeneID	6604
GeneBank Accession#	NM_001003801
Protein Accession#	NP_001003801
Gene Name	SMARCD3
Gene Alias	BAF60C, CRACD3, MGC111010, Rsc6p
Gene Description	SWI/SNF related, matrix associated, actin dependent regulator of chromatin, subfamily d, member 3
Omim ID	601737
Gene Ontology	Hyperlink
Gene Summary	The protein encoded by this gene is a member of the SWI/SNF family of proteins, whose members display helicase and ATPase activities and which are thought to regulate transcription of certain genes by altering the chromatin structure around those genes. The encoded protein is part of the large ATP-dependent chromatin remodeling complex SNF/SWI and has sequence similarity to the yeast Swp73 protein. Multiple alternatively spliced transcript variants have been found for this gene, but the biological validity of some variants has not been determined. [provided by RefSeq]
Other Designations	60kDa BRG-1/Brm associated factor subunit c SWI/SNF complex 60 kDa subunit C SWI/SNF related, matrix associated, actin dependent regulator of chromatin, subfamily d, member 3, isoform 1 Swp73-like protein chromatin remodeling complex BAF60C subunit mammal