

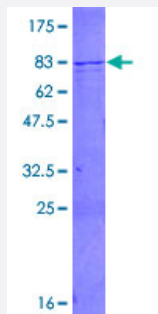
Full-Length

SMARCD1 (Human) Recombinant Protein (P01)

Catalog # H00006602-P01

Size 25 ug, 10 ug

Applications



Specification

Product Description

Human SMARCD1 full-length ORF (AAH09368.3, 1 a.a. - 476 a.a.) recombinant protein with GST-tag at N-terminal.

Sequence

MGPAPGQGLYRSPMPGAAYPRPGMLPGSRMTPQGPPSMGPPGYGGNPSVRPGLAQSGMDQSR
KRPAPQQIQVQQQAVQNRNHNKKKKMADKILPQRIELVPESQAYMDLLAFERKLDQTIMRKR
LDIQEALKRPIKQKRKLRFISNTFNPAKSDAEDGEGTVASWELRVEGRLLDSALSKYDATKQKR
KFSSFFKSLVIELDKDLYGPDNHLVEWHRTATTQETDGFQVKRPGDVNVRCTVLLMLDYQPPQF
KLDPRLARLLGIHTQTRPVIQALWQYIKTHKLQDPHEREFVICDKYLQQIFESQRMKFSEIPQRLHAL
LMPPEPIIIINHVISVDPNDQKKTACYDIDVEVDDLKTQMNSFLLSTASQQEATLDNKHETIETINQL
KTQREFMLSFARDPQGFINDWLQSQCRDLKTMTDVGNPPEERRAEFYFQPWAQEAVCRYFYS
KVQQRREQELEQALGIRNT

Host

Wheat Germ (in vitro)

Theoretical MW (kDa)

81.3

Interspecies Antigen Sequence

Mouse (99); Rat (100)

Preparation Method

[in vitro wheat germ expression system](#)

Purification

Glutathione Sepharose 4 Fast Flow

Quality Control Testing

12.5% SDS-PAGE Stained with Coomassie Blue.

Storage Buffer	50 mM Tris-HCl, 10 mM reduced Glutathione, pH=8.0 in the elution buffer.
Storage Instruction	Store at -80°C. Aliquot to avoid repeated freezing and thawing.
Note	Best use within three months from the date of receipt of this protein.

Applications

- Enzyme-linked Immunoabsorbent Assay
- Western Blot (Recombinant protein)
- Antibody Production
- Protein Array

Gene Info — SMARCD1

Entrez GeneID	6602
GeneBank Accession#	BC009368.2
Protein Accession#	AAH09368.3
Gene Name	SMARCD1
Gene Alias	BAF60A, CRACD1, Rsc6p
Gene Description	SWI/SNF related, matrix associated, actin dependent regulator of chromatin, subfamily d, member 1
Omim ID	601735
Gene Ontology	Hyperlink
Gene Summary	The protein encoded by this gene is a member of the SWI/SNF family of proteins, whose members display helicase and ATPase activities and which are thought to regulate transcription of certain genes by altering the chromatin structure around those genes. The encoded protein is part of the large ATP-dependent chromatin remodeling complex SNF/SWI and has sequence similarity to the yeast Swp73 protein. Two transcript variants encoding different isoforms have been found for this gene. [provided by RefSeq]
Other Designations	OTTHUMP00000196567 OTTHUMP00000196568 SWI/SNF complex 60 kDa subunit A SWI/SNF-related matrix-associated actin-dependent regulator of chromatin d1 Swp73-like protein chromatin remodeling complex BAF60A subunit mammalian chromatin remodeling complex BRG1-a