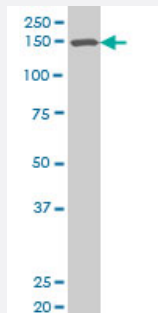


SMARCC1 polyclonal antibody (A01)

Catalog # H00006599-A01

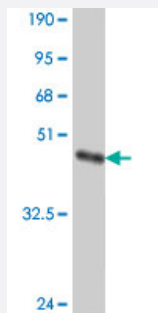
Size 50 uL

Applications



Western Blot (Cell lysate)

SMARCC1 polyclonal antibody (A01), Lot # 051012JC01 Western Blot analysis of SMARCC1 expression in SJCRH30 (Cat # L027V1).



Western Blot detection against Immunogen (37.11 KDa) .

Specification

Product Description	Mouse polyclonal antibody raised against a partial recombinant SMARCC1.
Immunogen	SMARCC1 (NP_003065, 338 a.a. ~ 437 a.a) partial recombinant protein with GST tag.
Sequence	ESRKKSGKKGQASLYGKRRSQKEEDEQEDLTKDMEDPTVPNIEEVVLPKNVNLKKDSENTPV KGGTVADLDEQDEETVTAGGKEDEDPAKGDQSRSDVL
Host	Mouse
Reactivity	Human
Interspecies Antigen Sequence	Mouse (95); Rat (91)

Quality Control Testing

Antibody Reactive Against Recombinant Protein.
Western Blot detection against Immunogen (37.11 KDa) .

Storage Buffer

50 % glycerol

Storage Instruction

Store at -20°C or lower. Aliquot to avoid repeated freezing and thawing.

Applications

- Western Blot (Cell lysate)

SMARCC1 polyclonal antibody (A01), Lot # 051012JC01 Western Blot analysis of SMARCC1 expression in SJCRH30 (Cat # L027V1).

[Protocol Download](#)

- Western Blot (Recombinant protein)

[Protocol Download](#)

- ELISA

Gene Info — SMARCC1

Entrez GeneID

[6599](#)

GeneBank Accession#

[NM_003074](#)

Protein Accession#

[NP_003065](#)

Gene Name

SMARCC1

Gene Alias

BAF155, CRACC1, Rsc8, SRG3, SWI3

Gene Description

SWI/SNF related, matrix associated, actin dependent regulator of chromatin, subfamily c, member 1

Omim ID

[601732](#)

Gene Ontology

[Hyperlink](#)

Gene Summary

The protein encoded by this gene is a member of the SWI/SNF family of proteins, whose members display helicase and ATPase activities and which are thought to regulate transcription of certain genes by altering the chromatin structure around those genes. The encoded protein is part of the large ATP-dependent chromatin remodeling complex SNF/SWI and contains a predicted leucine zipper motif typical of many transcription factors. [provided by RefSeq]

Other Designations

SWI/SNF complex 155 kDa subunit|SWI/SNF-related matrix-associated actin-dependent regulator of chromatin c1|chromatin remodeling complex BAF155 subunit|mammalian chromatin remodeling complex BRG1-associated factor 155

Disease

- [Genetic Predisposition to Disease](#)
- [Schizophrenia](#)
- [Tobacco Use Disorder](#)