

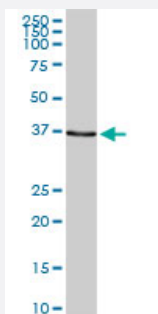
MaxPab®

SMARCB1 purified MaxPab rabbit polyclonal antibody (D01P)

Catalog # H00006598-D01P

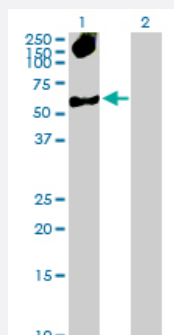
Size 100 ug

Applications



Western Blot (Tissue lysate)

SMARCB1 MaxPab rabbit polyclonal antibody. Western Blot analysis of SMARCB1 expression in mouse intestine.

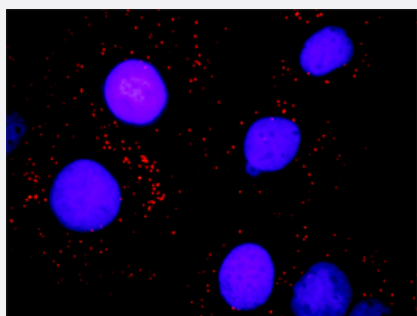


Western Blot (Transfected lysate)

Western Blot analysis of SMARCB1 expression in transfected 293T cell line ([H00006598-T01](#)) by SMARCB1 MaxPab polyclonal antibody.

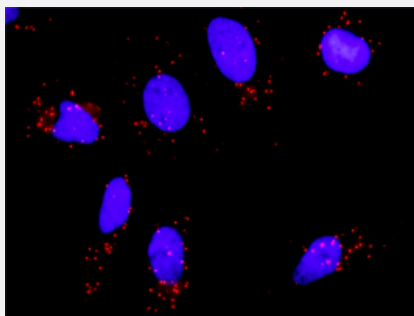
Lane 1: SMARCB1 transfected lysate(44.10 KDa).

Lane 2: Non-transfected lysate.



In situ Proximity Ligation Assay (Cell)

Proximity Ligation Analysis of protein-protein interactions between SMARCB1 and BAZ1B. Huh7 cells were stained with anti-SMARCB1 rabbit purified polyclonal 1:1200 and anti-BAZ1B mouse monoclonal antibody 1:50. Each red dot represents the detection of protein-protein interaction complex, and nuclei were counterstained with DAPI (blue).



In situ Proximity Ligation Assay (Cell)

Proximity Ligation Analysis of protein-protein interactions between SMARCB1 and BAZ1B. HeLa cells were stained with anti-SMARCB1 rabbit purified polyclonal 1:1200 and anti-BAZ1B mouse monoclonal antibody 1:50. Each red dot represents the detection of protein-protein interaction complex, and nuclei were counterstained with DAPI (blue).

Specification

Product Description	Rabbit polyclonal antibody raised against a full-length human SMARCB1 protein.
Immunogen	SMARCB1 (NP_003064.2, 1 a.a. ~ 385 a.a) full-length human protein.
Sequence	<p>MMMMALSKTFGQKPVKFQLEDDGEFYMIGSEVGNLYRMFRGSLYKRYPSLWRRLATVEERKKIV</p> <p>ASSHGKKTTPNTKDHGYTTLATSVTLKASEVEEILDGNDEKYKAVSISTEPPTYLREQKAKRNSQ</p> <p>WVPTLPNSSHHLDAVPCSTTINRMRGRDKKRTFPLCFDDHDPVHNASQPEVLVPIRLDMEI</p> <p>DGQKLRDAFTWNMNEKLMTPEMFSEILCDDLNLNPLTFVPAIASAIRQQIESYPTDSILEDQSDQR</p> <p>VIIKLNIHVGNISLVDQFEWDMSEKENSPEKFALKLCSELGLGGEFVTIAYSIRGQLSWHQKTYAF</p> <p>SENPLPTVEIAIRNTGDADQWCPLLETLTDAEMEKKIRDQDRNTRMRRLANTAPAW</p>
Host	Rabbit
Reactivity	Human, Mouse
Quality Control Testing	Antibody reactive against mammalian transfected lysate.
Storage Buffer	In 1x PBS, pH 7.4
Storage Instruction	Store at -20°C or lower. Aliquot to avoid repeated freezing and thawing.

Applications

● Western Blot (Tissue lysate)

SMARCB1 MaxPab rabbit polyclonal antibody. Western Blot analysis of SMARCB1 expression in mouse intestine.

[Protocol Download](#)

- Western Blot (Transfected lysate)

Western Blot analysis of SMARCB1 expression in transfected 293T cell line ([H00006598-T01](#)) by SMARCB1 MaxPab polyclonal antibody.

Lane 1: SMARCB1 transfected lysate(44.10 KDa).

Lane 2: Non-transfected lysate.

[Protocol Download](#)

- In situ* Proximity Ligation Assay (Cell)

Proximity Ligation Analysis of protein-protein interactions between SMARCB1 and BAZ1B. Huh7 cells were stained with anti-SMARCB1 rabbit purified polyclonal 1:1200 and anti-BAZ1B mouse monoclonal antibody 1:50. Each red dot represents the detection of protein-protein interaction complex, and nuclei were counterstained with DAPI (blue).

- In situ* Proximity Ligation Assay (Cell)

Proximity Ligation Analysis of protein-protein interactions between SMARCB1 and BAZ1B. HeLa cells were stained with anti-SMARCB1 rabbit purified polyclonal 1:1200 and anti-BAZ1B mouse monoclonal antibody 1:50. Each red dot represents the detection of protein-protein interaction complex, and nuclei were counterstained with DAPI (blue).

Gene Info — SMARCB1

Entrez GeneID	6598
GeneBank Accession#	NM_003073
Protein Accession#	NP_003064.2
Gene Name	SMARCB1
Gene Alias	BAF47, INI1, RDT, SNF5, SNF5L1, Sfh1p, Snr1, hSNFS
Gene Description	SWI/SNF related, matrix associated, actin dependent regulator of chromatin, subfamily b, member 1
Omim ID	601607
Gene Ontology	Hyperlink
Gene Summary	The protein encoded by this gene is part of a complex that relieves repressive chromatin structures, allowing the transcriptional machinery to access its targets more effectively. The encoded nuclear protein may also bind to and enhance the DNA joining activity of HIV-1 integrase. This gene has been found to be a tumor suppressor, and mutations in it have been associated with malignant rhabdoid tumors. Two transcript variants encoding different isoforms have been found for this gene. [provided by RefSeq]
Other Designations	integrase interactor 1 malignant rhabdoid tumor suppressor sucrose nonfermenting, yeast, homolog-like 1

Disease

- [Asthma](#)
- [Cardiovascular Diseases](#)
- [Diabetes Mellitus](#)
- [Edema](#)
- [Genetic Predisposition to Disease](#)
- [Meningeal Neoplasms](#)
- [Meningioma](#)
- [Pancreatic cancer](#)
- [Pancreatic Neoplasms](#)
- [Rhabdoid Tumor](#)