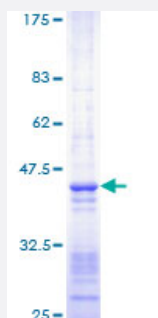


SMARCA4 (Human) Recombinant Protein (Q01)

Catalog # H00006597-Q01

Size 25 ug, 10 ug

Applications



Specification

Product Description	Human SMARCA4 partial ORF (NP_003063, 1451 a.a. - 1550 a.a.) recombinant protein with GST-tag at N-terminal.
Sequence	LSPNPPNLTKKMKKMDAVIKYKDSSSGRQLSEVFIQLPSRKELPEYYELIRKPVDFKKIKERIRNHK YRSLNDLEKDVMLLCQNAQTFNLEGSLYEDS
Host	Wheat Germ (in vitro)
Theoretical MW (kDa)	36.74
Interspecies Antigen Sequence	Mouse (100); Rat (99)
Preparation Method	in vitro wheat germ expression system
Purification	Glutathione Sepharose 4 Fast Flow
Quality Control Testing	12.5% SDS-PAGE Stained with Coomassie Blue.
Storage Buffer	50 mM Tris-HCl, 10 mM reduced Glutathione, pH=8.0 in the elution buffer.
Storage Instruction	Store at -80°C. Aliquot to avoid repeated freezing and thawing.
Note	Best use within three months from the date of receipt of this protein.

Applications

- Enzyme-linked Immunoabsorbent Assay
- Western Blot (Recombinant protein)
- Antibody Production
- Protein Array

Gene Info — SMARCA4

Entrez GeneID	6597
GeneBank Accession#	NM_003072
Protein Accession#	NP_003063
Gene Name	SMARCA4
Gene Alias	BAF190, BRG1, FLJ39786, SNF2, SNF2-BETA, SNF2L4, SNF2LB, SWI2, hSNF2b
Gene Description	SWI/SNF related, matrix associated, actin dependent regulator of chromatin, subfamily a, member 4
Omim ID	603254
Gene Ontology	Hyperlink
Gene Summary	The protein encoded by this gene is a member of the SWI/SNF family of proteins and is similar to the brahma protein of Drosophila. Members of this family have helicase and ATPase activities and are thought to regulate transcription of certain genes by altering the chromatin structure around those genes. The encoded protein is part of the large ATP-dependent chromatin remodeling complex SNF/SWI, which is required for transcriptional activation of genes normally repressed by chromatin. In addition, this protein can bind BRCA1, as well as regulate the expression of the tumorigenic protein CD44. Multiple transcript variants encoding different isoforms have been found for this gene. [provided by RefSeq]
Other Designations	ATP-dependent helicase SMARCA4 BRM/SWI2-related gene 1 SNF2-like 4 SWI/SNF-related matrix-associated actin-dependent regulator of chromatin a4 brahma protein-like 1 global transcription activator homologous sequence homeotic gene regulator mitotic growth

Disease

- [Breast cancer](#)
- [Breast Neoplasms](#)
- [Cardiovascular Diseases](#)
- [Diabetes Mellitus](#)
- [Edema](#)