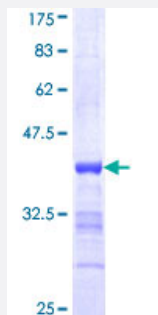


# SMARCA3 (Human) Recombinant Protein (Q01)

Catalog # H00006596-Q01

Size 25 ug, 10 ug

## Applications



## Specification

<b>Product Description</b>	Human SMARCA3 partial ORF ( NP_003062, 932 a.a. - 1009 a.a.) recombinant protein with GST-tag at N-terminal.
<b>Sequence</b>	PAWNPAEDQCFCRHLGQKQEVITKFKVDSVEENMLKIQNKKRELAAGAFGTKKPNADMKQAKINEIRTLIDL
<b>Host</b>	Wheat Germ (in vitro)
<b>Theoretical MW (kDa)</b>	34.32
<b>Interspecies Antigen Sequence</b>	Mouse (92); Rat (96)
<b>Preparation Method</b>	<a href="#">in vitro wheat germ expression system</a>
<b>Purification</b>	Glutathione Sepharose 4 Fast Flow
<b>Quality Control Testing</b>	12.5% SDS-PAGE Stained with Coomassie Blue.
<b>Storage Buffer</b>	50 mM Tris-HCl, 10 mM reduced Glutathione, pH=8.0 in the elution buffer.
<b>Storage Instruction</b>	Store at -80°C. Aliquot to avoid repeated freezing and thawing.
<b>Note</b>	Best use within three months from the date of receipt of this protein.

## Applications

- Enzyme-linked Immunoabsorbent Assay
- Western Blot (Recombinant protein)
- Antibody Production
- Protein Array

## Gene Info — HLTF

Entrez GeneID [6596](#)

GeneBank Accession# [NM\\_003071](#)

Protein Accession# [NP\\_003062](#)

Gene Name HLTF

Gene Alias HIP116, HIP116A, HLTF1, RNF80, SMARCA3, SNF2L3, ZBU1

Gene Description helicase-like transcription factor

Omim ID [603257](#)

Gene Ontology [Hyperlink](#)

**Gene Summary** This gene encodes a member of the SWI/SNF family. Members of this family have helicase and ATPase activities and are thought to regulate transcription of certain genes by altering the chromatin structure around those genes. The encoded protein contains a RING finger DNA binding motif. Two transcript variants encoding the same protein have been found for this gene. However, use of an alternative translation start site produces an isoform that is truncated at the N-terminus compared to the full-length protein. [provided by RefSeq]

**Other Designations** DNA-binding protein/plasminogen activator inhibitor-1 regulator|SNF2-like 3|SWI/SNF related, matrix associated, actin dependent regulator of chromatin, subfamily a, member 3|sucrose nonfermenting-like 3