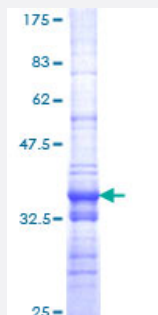


# SMARCA2 (Human) Recombinant Protein (Q01)

Catalog # H00006595-Q01

Size 25 ug, 10 ug

## Applications



## Specification

<b>Product Description</b>	Human SMARCA2 partial ORF ( NP_003061, 659 a.a. - 735 a.a.) recombinant protein with GST-tag at N-terminal.
<b>Sequence</b>	KILLDPNSEEVSEKDAKQIETAKQDQVDDEYSMQYSARGSQSYTVAHAISERVEKQSALLINGTLK HYQLQGLEWM
<b>Host</b>	Wheat Germ (in vitro)
<b>Theoretical MW (kDa)</b>	34.21
<b>Interspecies Antigen Sequence</b>	Mouse (100); Rat (97)
<b>Preparation Method</b>	<a href="#">in vitro wheat germ expression system</a>
<b>Purification</b>	Glutathione Sepharose 4 Fast Flow
<b>Quality Control Testing</b>	12.5% SDS-PAGE Stained with Coomassie Blue.
<b>Storage Buffer</b>	50 mM Tris-HCl, 10 mM reduced Glutathione, pH=8.0 in the elution buffer.
<b>Storage Instruction</b>	Store at -80°C. Aliquot to avoid repeated freezing and thawing.
<b>Note</b>	Best use within three months from the date of receipt of this protein.

## Applications

- Enzyme-linked Immunoabsorbent Assay
- Western Blot (Recombinant protein)
- Antibody Production
- Protein Array

## Gene Info — SMARCA2

Entrez GeneID	<a href="#">6595</a>
GeneBank Accession#	<a href="#">NM_003070</a>
Protein Accession#	<a href="#">NP_003061</a>
Gene Name	SMARCA2
Gene Alias	BAF190, BRM, FLJ36757, MGC74511, SNF2, SNF2L2, SNF2LA, SWI2, Sth1p, hBRM, hSNF2a
Gene Description	SWI/SNF related, matrix associated, actin dependent regulator of chromatin, subfamily a, member 2
Omim ID	<a href="#">600014</a>
Gene Ontology	<a href="#">Hyperlink</a>
Gene Summary	The protein encoded by this gene is a member of the SWI/SNF family of proteins and is highly similar to the brahma protein of Drosophila. Members of this family have helicase and ATPase activities and are thought to regulate transcription of certain genes by altering the chromatin structure around those genes. The encoded protein is part of the large ATP-dependent chromatin remodeling complex SNF/SWI, which is required for transcriptional activation of genes normally repressed by chromatin. Two transcript variants encoding different isoforms have been found for this gene, which contains a trinucleotide repeat (CAG) length polymorphism. [provided by RefSeq]
Other Designations	OTTHUMP00000020970 OTTHUMP00000020971 SNF2-alpha SNF2-like 2 SNF2/SWI2-like protein 2 SWI/SNF-related matrix-associated actin-dependent regulator of chromatin a2 global transcription activator homologous sequence sucrose nonfermenting 2-like protein 2

## Disease

- [Breast cancer](#)
- [Breast Neoplasms](#)
- [Schizophrenia](#)
- [Tobacco Use Disorder](#)