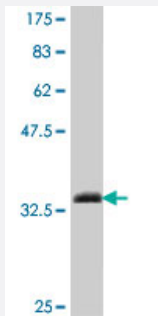


SMARCA2 polyclonal antibody (A01)

Catalog # H00006595-A01

Size 50 uL

Applications



Western Blot detection against Immunogen (34.58 KDa) .

Specification

Product Description	Mouse polyclonal antibody raised against a partial recombinant SMARCA2.
Immunogen	SMARCA2 (NP_003061, 659 a.a. ~ 735 a.a) partial recombinant protein with GST tag.
Sequence	KILLDPNSEEVSEKDAKQIIETAKQDQVDDEYSMQYSARGSQSYTVAHAISERVEKQSALLINGTLK HYQLQGLEWM
Host	Mouse
Reactivity	Human
Interspecies Antigen Sequence	Mouse (100); Rat (97)
Quality Control Testing	Antibody Reactive Against Recombinant Protein. Western Blot detection against Immunogen (34.58 KDa) .
Storage Buffer	50 % glycerol
Storage Instruction	Store at -20°C or lower. Aliquot to avoid repeated freezing and thawing.

Applications

- Western Blot (Recombinant protein)

[Protocol Download](#)

- ELISA

Gene Info — SMARCA2

Entrez GeneID [6595](#)

GeneBank Accession# [NM_003070](#)

Protein Accession# [NP_003061](#)

Gene Name SMARCA2

Gene Alias BAF190, BRM, FLJ36757, MGC74511, SNF2, SNF2L2, SNF2LA, SWI2, Sth1p, hBRM, hSNF2a

Gene Description SWI/SNF related, matrix associated, actin dependent regulator of chromatin, subfamily a, member 2

Omim ID [600014](#)

Gene Ontology [Hyperlink](#)

Gene Summary The protein encoded by this gene is a member of the SWI/SNF family of proteins and is highly similar to the brahma protein of Drosophila. Members of this family have helicase and ATPase activities and are thought to regulate transcription of certain genes by altering the chromatin structure around those genes. The encoded protein is part of the large ATP-dependent chromatin remodeling complex SNF/SWI, which is required for transcriptional activation of genes normally repressed by chromatin. Two transcript variants encoding different isoforms have been found for this gene, which contains a trinucleotide repeat (CAG) length polymorphism. [provided by RefSeq]

Other Designations OTTHUMP00000020970|OTTHUMP00000020971|SNF2-alpha|SNF2-like 2|SNF2/SWI2-like protein 2|SWI/SNF-related matrix-associated actin-dependent regulator of chromatin a2|global transcription activator homologous sequence|sucrose nonfermenting 2-like protein 2

Disease

- [Breast cancer](#)
- [Breast Neoplasms](#)
- [Schizophrenia](#)
- [Tobacco Use Disorder](#)