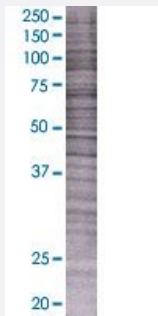


SLC16A1 293T Cell Transient Overexpression Lysate(Denatured)

Catalog # H00006566-T01

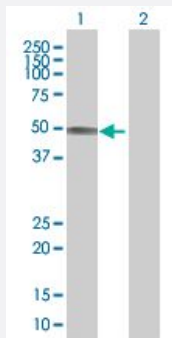
Size 100 uL

Applications



SDS-PAGE Gel

SLC16A1 transfected lysate.



Western Blot

Lane 1: SLC16A1 transfected lysate (55.11 KDa)

Lane 2: Non-transfected lysate.

Specification

Transfected Cell Line 293T

Plasmid pCMV-SLC16A1 full-length

Host Human

Theoretical MW (kDa) 55.11

Quality Control Testing Transient overexpression cell lysate was tested with Anti-SLC16A1 antibody ([H00006566-B01](#)) by Western Blots.
SDS-PAGE Gel
SLC16A1 transfected lysate.
Western Blot
Lane 1: SLC16A1 transfected lysate (55.11 KDa)
Lane 2: Non-transfected lysate.

Storage Buffer	1X Sample Buffer (50 mM Tris-HCl, 2% SDS, 10% glycerol, 300 mM 2-mercaptoethanol, 0.01% Bromophenol blue)
Storage Instruction	Store at -80°C. Aliquot to avoid repeated freezing and thawing.

Applications

- Western Blot

Gene Info — SLC16A1

Entrez GeneID	6566
GeneBank Accession#	NM_003051.2
Protein Accession#	P53985
Gene Name	SLC16A1
Gene Alias	FLJ36745, HHF7, MCT, MCT1, MGC44475
Gene Description	solute carrier family 16, member 1 (monocarboxylic acid transporter 1)
Omim ID	245340 600682
Gene Ontology	Hyperlink
Gene Summary	The SLC16A1 gene encodes a monocarboxylate transporter (MCT1) that mediates the movement of lactate and pyruvate across cell membranes. Import and export of these substrates by tissues such as erythrocytes, muscle, intestine, and kidney are ascribed largely to the action of a proton-coupled MCT (Garcia et al., 1994 [PubMed 8124722]). [supplied by OMIM]
Other Designations	OTTHUMP00000013960 monocarboxylate transporter 1 solute carrier family 16 (monocarboxylic acid transporters), member 1 solute carrier family 16, member 1

Disease

- [Cardiovascular Diseases](#)
- [Diabetes Mellitus](#)
- [Edema](#)
- [Hearing Loss](#)

- [Kidney Failure](#)