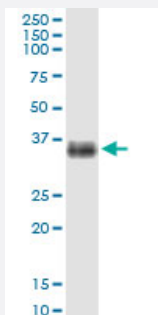


# SLC14A1 (Human) IP-WB Antibody Pair

Catalog # H00006563-PW1

Size 1 Set

## Applications



Immunoprecipitation of SLC14A1 transfected lysate using rabbit polyclonal anti-SLC14A1 and Protein A Magnetic Bead ([U0007](#)), and immunoblotted with mouse purified polyclonal anti-SLC14A1.

## Specification

<b>Product Description</b>	This IP-WB antibody pair set comes with one antibody for immunoprecipitation and another to detect the precipitated protein in western blot.
<b>Reactivity</b>	Human
<b>Interspecies Antigen Sequence</b>	Mouse (83); Rat (79)
<b>Quality Control Testing</b>	Immunoprecipitation-Western Blot (IP-WB) Immunoprecipitation of SLC14A1 transfected lysate using rabbit polyclonal anti-SLC14A1 and Protein A Magnetic Bead ( <a href="#">U0007</a> ), and immunoblotted with mouse purified polyclonal anti-SLC14A1.
<b>Supplied Product</b>	Antibody pair set content: 1. Antibody pair for IP: rabbit polyclonal anti-SLC14A1 (300 ul) 2. Antibody pair for WB: mouse purified polyclonal anti-SLC14A1 (50 ug)
<b>Storage Instruction</b>	Store reagents of the antibody pair set at -20°C or lower. Please aliquot to avoid repeated freeze thaw cycle. Reagents should be returned to -20°C storage immediately after use.

## Applications

- Immunoprecipitation-Western Blot

[Protocol Download](#)

## Gene Info — SLC14A1

Entrez GeneID	<a href="#">6563</a>
Gene Name	SLC14A1
Gene Alias	FLJ33745, FLJ41687, HUT11, HsT1341, JK, RACH1, UT-B1, UT1, UTE
Gene Description	solute carrier family 14 (urea transporter), member 1 (Kidd blood group)
Omim ID	<a href="#">111000</a>
Gene Ontology	<a href="#">Hyperlink</a>
Gene Summary	The protein encoded by this gene is a membrane transporter that mediates urea transport in erythrocytes. This gene forms the basis for the Kidd blood group system. [provided by RefSeq]
Other Designations	blood group Kidd urea transporter kidd (JK) blood group/urea transporter-B1 solute carrier family 14 (urea transporter), member 1 urea transporter JK glycoprotein urea transporter-B1

## Disease

- [Genetic Predisposition to Disease](#)
- [Hyperparathyroidism](#)
- [Tobacco Use Disorder](#)