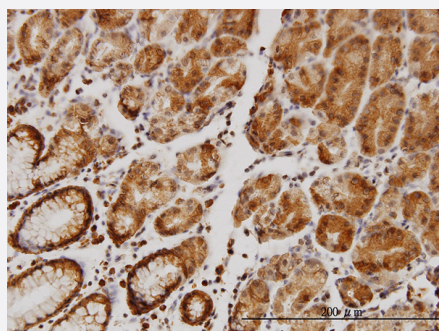


SLC9A1 monoclonal antibody (M01), clone 2F5

Catalog # H00006548-M01

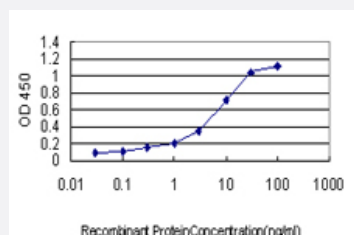
Size 100 ug

Applications



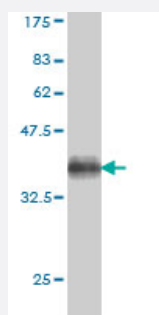
Immunohistochemistry (Formalin/PFA-fixed paraffin-embedded sections)

Immunoperoxidase of monoclonal antibody to SLC9A1 on formalin-fixed paraffin-embedded human stomach. [antibody concentration 3 ug/ml]



Sandwich ELISA (Recombinant protein)

Detection limit for recombinant GST tagged SLC9A1 is approximately 0.3ng/ml as a capture antibody.



Western Blot detection against Immunogen (36.41 KDa) .

Specification

Product Description

Mouse monoclonal antibody raised against a partial recombinant SLC9A1.

Immunogen	SLC9A1 (AAH12121, 31 a.a. ~ 130 a.a) partial recombinant protein with GST tag. MW of the GST tag alone is 26 KDa.
Sequence	VLRSHGLQLSPTASTIRSSEPPRERSIGDVTTAPPEVTPESRPVNHSVTDHGMKPRKAFFVLGIDY THVRTPFEISLWILLACLMKIGFHVPTISSVP
Host	Mouse
Reactivity	Human
Interspecies Antigen Sequence	Mouse (81); Rat (79)
Isotype	IgG1 Kappa
Quality Control Testing	Antibody Reactive Against Recombinant Protein. Western Blot detection against Immunogen (36.41 KDa) .
Storage Buffer	In 1x PBS, pH 7.4
Storage Instruction	Store at -20°C or lower. Aliquot to avoid repeated freezing and thawing.

Applications

- Western Blot (Recombinant protein)

[Protocol Download](#)

- Immunohistochemistry (Formalin/PFA-fixed paraffin-embedded sections)

Immunoperoxidase of monoclonal antibody to SLC9A1 on formalin-fixed paraffin-embedded human stomach. [antibody concentration 3 ug/ml]

[Protocol Download](#)

- Sandwich ELISA (Recombinant protein)

Detection limit for recombinant GST tagged SLC9A1 is approximately 0.3ng/ml as a capture antibody.

[Protocol Download](#)

- ELISA

Gene Info — SLC9A1

Entrez GeneID

[6548](#)

GeneBank Accession#	BC012121
Protein Accession#	AAH12121
Gene Name	SLC9A1
Gene Alias	APNH, FLJ42224, NHE1
Gene Description	solute carrier family 9 (sodium/hydrogen exchanger), member 1
Omim ID	107310
Gene Ontology	Hyperlink
Gene Summary	The Na ⁺ /H ⁺ antiporter (SLC9A1) is a ubiquitous membrane-bound enzyme involved in pH regulation of vertebrate cells. It is specifically inhibited by the diuretic drug amiloride and activated by a variety of signals including growth factors, mitogens, neurotransmitters, tumor promoters, and others (Mattei et al., 1988 [PubMed 2846238]).[supplied by OMIM]
Other Designations	Na ⁺ /H ⁺ antiporter, amiloride-sensitive Na-Li countertransporter OTTHUMP00000004468 sodium/hydrogen exchanger 1 solute carrier family 9 (sodium/hydrogen exchanger), isoform 1 (antiporter, Na ⁺ /H ⁺ , amiloride sensitive) solute carrier family 9 (sodium/hydroge

Pathway

- [Cardiac muscle contraction](#)
- [Regulation of actin cytoskeleton](#)

Disease

- [Cerebrovascular Accident](#)
- [Genetic Predisposition to Disease](#)
- [Seizures](#)