

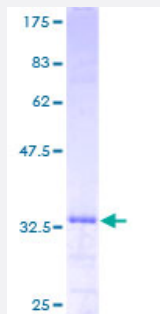
Full-Length

SMTN (Human) Recombinant Protein (P01)

Catalog # H00006525-P01

Size 25 ug, 10 ug

Applications



Specification

Product Description	Human SMTN full-length ORF (AAH12026, 1 a.a. - 67 a.a.) recombinant protein with GST-tag at N-terminal.
Sequence	MGPLTSFRRAPSSSPAKASSAISLAPSSVGSFLVRSPVPVAPVTSSSENSAGDRHESGMLGLPET TGT
Host	Wheat Germ (in vitro)
Theoretical MW (kDa)	33.11
Interspecies Antigen Sequence	Mouse (32); Rat (35)
Preparation Method	in vitro wheat germ expression system
Purification	Glutathione Sepharose 4 Fast Flow
Quality Control Testing	12.5% SDS-PAGE Stained with Coomassie Blue.
Storage Buffer	50 mM Tris-HCl, 10 mM reduced Glutathione, pH=8.0 in the elution buffer.
Storage Instruction	Store at -80°C. Aliquot to avoid repeated freezing and thawing.
Note	Best use within three months from the date of receipt of this protein.

Applications

- Enzyme-linked Immunoabsorbent Assay
- Western Blot (Recombinant protein)
- Antibody Production
- Protein Array

Gene Info — SMTN

Entrez GeneID [6525](#)

GeneBank Accession# [BC012026](#)

Protein Accession# [AAH12026](#)

Gene Name SMTN

Gene Alias FLJ35365, FLJ38597

Gene Description smoothelin

Omim ID [602127](#)

Gene Ontology [Hyperlink](#)

Gene Summary This gene encodes a structural protein that is found exclusively in contractile smooth muscle cells. It associates with stress fibers and constitutes part of the cytoskeleton. This gene is localized to chromosome 22q12.3, distal to the TUPLE1 locus and outside the DiGeorge syndrome deletion. Alternative splicing of this gene results in three transcript variants. [provided by RefSeq]

Other Designations -