

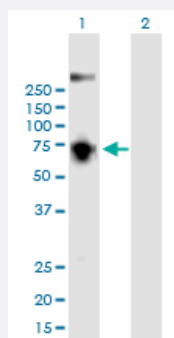
CX Grade

SLC5A2 monoclonal antibody (M01J), clone 3G8

Catalog # H00006524-M01J

Size 100 ug

Applications

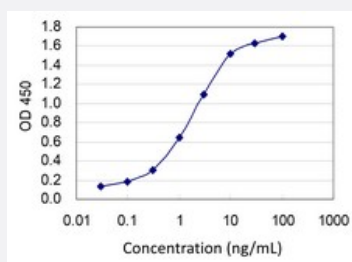


Western Blot (Transfected lysate)

Western Blot analysis of SLC5A2 expression in transfected 293T cell line by SLC5A2 monoclonal antibody (M01J), clone 3G8.

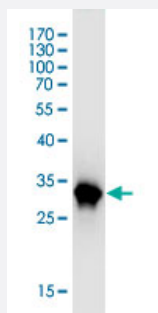
Lane 1: SLC5A2 transfected lysate (Predicted MW: 72.9000000 KDa).

Lane 2: Non-transfected lysate.



Sandwich ELISA (Recombinant protein)

Detection limit for recombinant GST tagged SLC5A2 is 0.03 ng/ml as a capture antibody.



Western Blot detection against Immunogen (31.24 KDa) .

Specification

Product Description

Mouse monoclonal antibody raised against a partial recombinant SLC5A2. This product is belong to Cell Culture Grade Antibody (CX Grade).

Immunogen	SLC5A2 (NP_003032.1, 228 a.a. ~ 277 a.a) partial recombinant protein with GST tag. MW of the GST tag alone is 26 KDa.
Sequence	GLFDKYLGAATSLTVSEDPVAGNISSFCYRPRPDSYHLLRHPVTGDLWPW
Host	Mouse
Reactivity	Human
Interspecies Antigen Sequence	Mouse (88); Rat (90)
Preparation Method	Cell Culture Production
Isotype	IgG2a Kappa
Quality Control Testing	Antibody Reactive Against Recombinant Protein. Western Blot detection against Immunogen (31.24 KDa) .
Storage Buffer	In 1x PBS, pH 7.4
Storage Instruction	Store at -20°C or lower. Aliquot to avoid repeated freezing and thawing.

Applications

- Western Blot (Transfected lysate)

Western Blot analysis of SLC5A2 expression in transfected 293T cell line by SLC5A2 monoclonal antibody (M01J), clone 3G8.

Lane 1: SLC5A2 transfected lysate (Predicted MW: 72.9000000 KDa).

Lane 2: Non-transfected lysate.

[Protocol Download](#)

- Western Blot (Recombinant protein)

[Protocol Download](#)

- Sandwich ELISA (Recombinant protein)

Detection limit for recombinant GST tagged SLC5A2 is 0.03 ng/ml as a capture antibody.

[Protocol Download](#)

- ELISA

Gene Info — SLC5A2

Entrez GeneID	6524
GeneBank Accession#	NM_003041
Protein Accession#	NP_003032.1
Gene Name	SLC5A2
Gene Alias	SGLT2
Gene Description	solute carrier family 5 (sodium/glucose cotransporter), member 2
Omim ID	182381 233100
Gene Ontology	Hyperlink
Gene Summary	This gene encodes a member of the sodium glucose cotransporter family which are sodium-dependent glucose transport proteins. The encoded protein is the major cotransporter involved in glucose reabsorption in the kidney. Mutations in this gene are associated with renal glucosuria. [provided by RefSeq]
Other Designations	OTTHUMP00000163298 low affinity sodium-glucose cotransporter sodium/glucose cotransporter solute carrier family 5 (sodium/glucose transporter), member 2