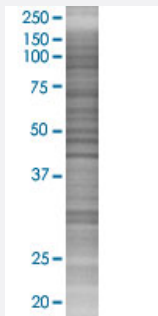


SLC5A1 293T Cell Transient Overexpression Lysate(Denatured)

Catalog # H00006523-T02

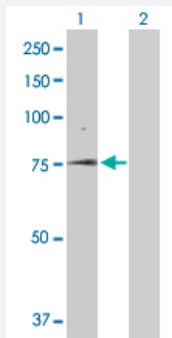
Size 100 uL

Applications



SDS-PAGE Gel

SLC5A1 transfected lysate.



Western Blot

Lane 1: SLC5A1 transfected lysate (73.04 KDa)

Lane 2: Non-transfected lysate.

Specification

Transfected Cell Line	293T
Plasmid	pCMV-SLC5A1 full-length
Host	Human
Theoretical MW (kDa)	73.04
Interspecies Antigen Sequence	Mouse (88); Rat (88)

Quality Control Testing

Transient overexpression cell lysate was tested with Anti-SLC5A1 antibody ([H00006523-D01P](#)) by Western Blots.
SDS-PAGE Gel
SLC5A1 transfected lysate.
Western Blot
Lane 1: SLC5A1 transfected lysate (73.04 KDa)
Lane 2: Non-transfected lysate.

Storage Buffer

1X Sample Buffer (50 mM Tris-HCl, 2% SDS, 10% glycerol, 300 mM 2-mercaptoethanol, 0.01% Bromophenol blue)

Storage Instruction

Store at -80°C. Aliquot to avoid repeated freezing and thawing.

Applications

- Western Blot

Gene Info — SLC5A1

Entrez GeneID[6523](#)**GeneBank Accession#**[BC146580](#)**Protein Accession#**[AA46581.1](#)**Gene Name**

SLC5A1

Gene Alias

D22S675, NAGT, SGLT1

Gene Description

solute carrier family 5 (sodium/glucose cotransporter), member 1

Omim ID[182380 606824](#)**Gene Ontology**[Hyperlink](#)**Gene Summary**

Glucose transporters are integral membrane proteins that mediate the transport of glucose and structurally-related substances across cellular membranes. Two families of glucose transporter have been identified: the facilitated-diffusion glucose transporter family (GLUT family), also known as 'uniporters,' and the sodium-dependent glucose transporter family (SGLT family), also known as 'cotransporters' or 'symporters' (Wright et al., 1994 [PubMed 7823022]). The SLC5A1 gene encodes a protein that is involved in the active transport of glucose and galactose into eukaryotic and some prokaryotic cells.[supplied by OMIM]

Other Designations

Human Na⁺/glucose cotransporter 1 mRNA, complete cds|sodium/glucose cotransporter 1|solute carrier family 5 (sodium/glucose transporter), member 1

Disease

- [Genetic Predisposition to Disease](#)
- [Hyperparathyroidism](#)
- [Tobacco Use Disorder](#)