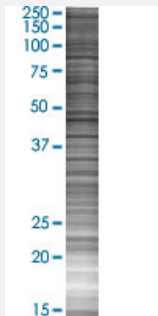


# SLC3A1 293T Cell Transient Overexpression Lysate(Denatured)

Catalog # H00006519-T01

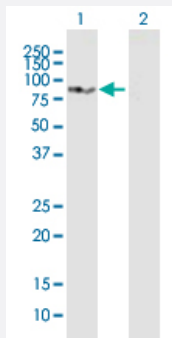
Size 100 uL

## Applications



### SDS-PAGE Gel

SLC3A1 transfected lysate.



### Western Blot

Lane 1: SLC3A1 transfected lysate ( 78.8 KDa)

Lane 2: Non-transfected lysate.

## Specification

Transfected Cell Line	293T
Plasmid	pCMV-SLC3A1 full-length
Host	Human
Theoretical MW (kDa)	78.8
Interspecies Antigen Sequence	Mouse (80); Rat (80)

## Quality Control Testing

Transient overexpression cell lysate was tested with Anti-SLC3A1 antibody ([H00006519-B01P](#)) by Western Blots.

SDS-PAGE Gel

SLC3A1 transfected lysate.

Western Blot

Lane 1: SLC3A1 transfected lysate ( 78.8 KDa)

Lane 2: Non-transfected lysate.

## Storage Buffer

1X Sample Buffer (50 mM Tris-HCl, 2% SDS, 10% glycerol, 300 mM 2-mercaptoethanol, 0.01% Bromophenol blue)

## Storage Instruction

Store at -80°C. Aliquot to avoid repeated freezing and thawing.

## Applications

- Western Blot

## Gene Info — SLC3A1

## Entrez GeneID

[6519](#)

## GeneBank Accession#

[NM\\_000341.2](#)

## Protein Accession#

[NP\\_000332.1](#)

## Gene Name

SLC3A1

## Gene Alias

ATR1, CSNU1, D2H, FLJ34681, NBAT, RBAT

## Gene Description

solute carrier family 3 (cystine, dibasic and neutral amino acid transporters, activator of cystine, dibasic and neutral amino acid transport), member 1

## Omim ID

[104614](#) [220100](#) [606407](#)

## Gene Ontology

[Hyperlink](#)

## Gene Summary

This gene encodes a type II membrane glycoprotein which is one of the components of the renal amino acid transporter which transports neutral and basic amino acids in the renal tubule and intestinal tract. Mutations and deletions in this gene are associated with cystinuria. Alternatively spliced transcript variants have been described, but their biological validity has not been determined. [provided by RefSeq]

## Other Designations

B(0,+)-type amino acid transport protein|SLC3A1 variant B|SLC3A1 variant C|SLC3A1 variant D|SLC3A1 variant E|SLC3A1 variant F|SLC3A1 variant G|amino acid transporter 1|solute carrier family 3 (cystine, dibasic and neutral amino acid transporters), member

## Disease

- [Cardiomyopathy](#)
- [Cystinuria](#)
- [Genetic Predisposition to Disease](#)
- [Hypertension](#)