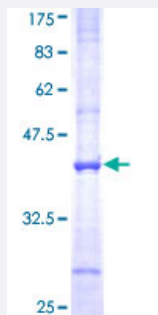


SLC3A1 (Human) Recombinant Protein (Q01)

Catalog # H00006519-Q01

Size 25 ug, 10 ug

Applications



Specification

Product Description	Human SLC3A1 partial ORF (AAH22386, 211 a.a. - 320 a.a.) recombinant protein with GST-tag at N-terminal.
Sequence	FIPNHTSDKHWFQLSRTRTGKYTDYYWHDCTHENGKTIPPNNWLSVYGNSSWHFDEVNRNQCYPH QFMKEQPDNLNFRNPDVQEEIKEILRFWLTKGVDGFSLDAVKFLL
Host	Wheat Germ (in vitro)
Theoretical MW (kDa)	37.73
Interspecies Antigen Sequence	Mouse (87); Rat (85)
Preparation Method	in vitro wheat germ expression system
Purification	Glutathione Sepharose 4 Fast Flow
Quality Control Testing	12.5% SDS-PAGE Stained with Coomassie Blue.
Storage Buffer	50 mM Tris-HCl, 10 mM reduced Glutathione, pH=8.0 in the elution buffer.
Storage Instruction	Store at -80°C. Aliquot to avoid repeated freezing and thawing.
Note	Best use within three months from the date of receipt of this protein.

Applications

- Enzyme-linked Immunoabsorbent Assay
- Western Blot (Recombinant protein)
- Antibody Production
- Protein Array

Gene Info — SLC3A1

Entrez GeneID	6519
GeneBank Accession#	BC022386
Protein Accession#	AAH22386
Gene Name	SLC3A1
Gene Alias	ATR1, CSNU1, D2H, FLJ34681, NBAT, RBAT
Gene Description	solute carrier family 3 (cystine, dibasic and neutral amino acid transporters, activator of cystine, di basic and neutral amino acid transport), member 1
Omim ID	104614 220100 606407
Gene Ontology	Hyperlink
Gene Summary	This gene encodes a type II membrane glycoprotein which is one of the components of the renal amino acid transporter which transports neutral and basic amino acids in the renal tubule and intestinal tract. Mutations and deletions in this gene are associated with cystinuria. Alternatively spliced transcript variants have been described, but their biological validity has not been determined. [provided by RefSeq]
Other Designations	B(0,+)-type amino acid transport protein SLC3A1 variant B SLC3A1 variant C SLC3A1 variant D SLC3A1 variant E SLC3A1 variant F SLC3A1 variant G amino acid transporter 1 solute carrier family 3 (cystine, dibasic and neutral amino acid transporters), member

Disease

- [Cardiomyopathy](#)
- [Cystinuria](#)

- [Genetic Predisposition to Disease](#)
- [Hypertension](#)