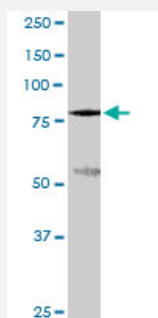


SLC3A1 monoclonal antibody (M01), clone 2F2

Catalog # H00006519-M01

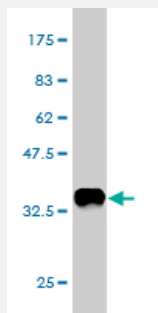
Size 100 ug

Applications



Western Blot (Tissue lysate)

SLC3A1 monoclonal antibody (M01), clone 2F2. Western Blot analysis of SLC3A1 expression in human pancreas.



Western Blot detection against Immunogen (37.73 KDa) .

Specification

Product Description	Mouse monoclonal antibody raised against a partial recombinant SLC3A1.
Immunogen	SLC3A1 (AAH22386, 211 a.a. ~ 320 a.a) partial recombinant protein with GST tag. MW of the GST tag alone is 26 KDa.
Sequence	FIPNHTSDKHWFQLSRTRTGKYTDYYWHDCTHENGKTIPPNNWLSVYGNSSWHFDEVNRNQCYPHQFMKEQPDNLNFRNPDVQEEIKEILRFWLTKGVDGFSLDAVKFLL
Host	Mouse
Reactivity	Human

Interspecies Antigen Sequence	Mouse (87); Rat (85)
Isotype	IgG2a Kappa
Quality Control Testing	Antibody Reactive Against Recombinant Protein. Western Blot detection against Immunogen (37.73 KDa) .
Storage Buffer	In 1x PBS, pH 7.4
Storage Instruction	Store at -20°C or lower. Aliquot to avoid repeated freezing and thawing.

Applications

- Western Blot (Tissue lysate)

SLC3A1 monoclonal antibody (M01), clone 2F2. Western Blot analysis of SLC3A1 expression in human pancreas.

[Protocol Download](#)

- Western Blot (Recombinant protein)

[Protocol Download](#)

- ELISA

Gene Info — SLC3A1

Entrez GeneID	6519
GeneBank Accession#	BC022386
Protein Accession#	AAH22386
Gene Name	SLC3A1
Gene Alias	ATR1, CSNU1, D2H, FLJ34681, NBAT, RBAT
Gene Description	solute carrier family 3 (cystine, dibasic and neutral amino acid transporters, activator of cystine, dibasic and neutral amino acid transport), member 1
Omim ID	104614 220100 606407
Gene Ontology	Hyperlink

Gene Summary

This gene encodes a type II membrane glycoprotein which is one of the components of the renal amino acid transporter which transports neutral and basic amino acids in the renal tubule and intestinal tract. Mutations and deletions in this gene are associated with cystinuria. Alternatively spliced transcript variants have been described, but their biological validity has not been determined. [provided by RefSeq]

Other Designations

B(0,+)-type amino acid transport protein|SLC3A1 variant B|SLC3A1 variant C|SLC3A1 variant D|SLC3A1 variant E|SLC3A1 variant F|SLC3A1 variant G|amino acid transporter 1|solute carrier family 3 (cystine, dibasic and neutral amino acid transporters), member

Disease

- [Cardiomyopathy](#)
- [Cystinuria](#)
- [Genetic Predisposition to Disease](#)
- [Hypertension](#)