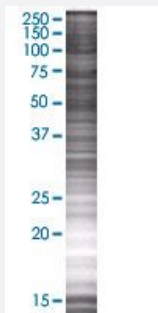


# SKP1A 293T Cell Transient Overexpression Lysate(Denatured)

Catalog # H00006500-T01

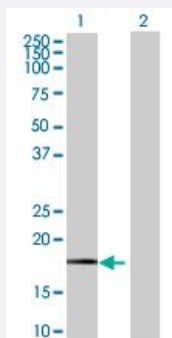
Size 100 uL

## Applications



### SDS-PAGE Gel

SKP1 transfected lysate.



### Western Blot

Lane 1: SKP1 transfected lysate ( 17.71 KDa)

Lane 2: Non-transfected lysate.

## Specification

**Transfected Cell Line** 293T

**Plasmid** pCMV-SKP1A full-length

**Host** Human

**Theoretical MW (kDa)** 17.71

**Quality Control Testing** Transient overexpression cell lysate was tested with Anti-SKP1A antibody ([H00006500-B01](#)) by Western Blots.  
SDS-PAGE Gel  
SKP1 transfected lysate.  
Western Blot  
Lane 1: SKP1 transfected lysate ( 17.71 KDa)  
Lane 2: Non-transfected lysate.

Storage Buffer	1X Sample Buffer (50 mM Tris-HCl, 2% SDS, 10% glycerol, 300 mM 2-mercaptoethanol, 0.01% Bromophenol blue)
Storage Instruction	Store at -80°C. Aliquot to avoid repeated freezing and thawing.

## Applications

- Western Blot

## Gene Info — SKP1

Entrez GeneID	<a href="#">6500</a>
GeneBank Accession#	<a href="#">NM_006930.2</a>
Protein Accession#	<a href="#">NP_008861.2</a>
Gene Name	SKP1
Gene Alias	EMC19, MGC34403, OCP-II, OCP2, SKP1A, TCEB1L, p19A
Gene Description	S-phase kinase-associated protein 1
Omim ID	<a href="#">601434</a>
Gene Ontology	<a href="#">Hyperlink</a>

Gene Summary	This gene encodes a component of SCF complexes, which are composed of this protein, cullin 1, a ring-box protein, and one member of the F-box family of proteins. This protein binds directly to the F-box motif found in F-box proteins. SCF complexes are involved in the regulated ubiquitination of specific protein substrates, which targets them for degradation by the proteasome. Specific F-box proteins recognize different target protein(s), and many specific SCF substrates have been identified including regulators of cell cycle progression and development. Studies have also characterized the protein as an RNA polymerase II elongation factor. Alternative splicing of this gene results in two transcript variants. A related pseudogene has been identified on chromosome 7. [provided by RefSeq]
--------------	---

Other Designations	RNA polymerase II elongation factor-like protein OCP2 cyclin A/CDK2-associated p19 organ of Corti protein 2 transcription elongation factor B (SIII), polypeptide 1-like
--------------------	--

## Pathway

- [Cell cycle](#)

- [TGF-beta signaling pathway](#)
- [Ubiquitin mediated proteolysis](#)
- [Wnt signaling pathway](#)

## Disease

- [Tobacco Use Disorder](#)