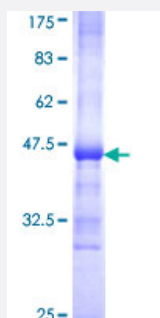


SKP1A (Human) Recombinant Protein (Q01)

Catalog # H00006500-Q01

Size 25 ug, 10 ug

Applications



Specification

Product Description	Human SKP1A partial ORF (NP_008861, 53 a.a. - 160 a.a.) recombinant protein with GST-tag at N-terminal.
Sequence	AILKKVIQWCTHHKDDPPPPEDDENKEKRTDDIPVWDQEFLKVDQGTLFELILAANYLDIKGLLDV TCKTVANMIKGKTPPEIRKTFNKNDFTEEEEAQVGSTQFCL
Host	Wheat Germ (in vitro)
Theoretical MW (kDa)	37.62
Preparation Method	in vitro wheat germ expression system
Purification	Glutathione Sepharose 4 Fast Flow
Quality Control Testing	12.5% SDS-PAGE Stained with Coomassie Blue.
Storage Buffer	50 mM Tris-HCl, 10 mM reduced Glutathione, pH=8.0 in the elution buffer.
Storage Instruction	Store at -80°C. Aliquot to avoid repeated freezing and thawing.
Note	Best use within three months from the date of receipt of this protein.

Applications

- Enzyme-linked Immunoabsorbent Assay
- Western Blot (Recombinant protein)
- Antibody Production
- Protein Array

Gene Info — SKP1

Entrez GeneID [6500](#)

GeneBank Accession# [NM_006930](#)

Protein Accession# [NP_008861](#)

Gene Name SKP1

Gene Alias EMC19, MGC34403, OCP-II, OCP2, SKP1A, TCEB1L, p19A

Gene Description S-phase kinase-associated protein 1

Omim ID [601434](#)

Gene Ontology [Hyperlink](#)

Gene Summary This gene encodes a component of SCF complexes, which are composed of this protein, cullin 1, a ring-box protein, and one member of the F-box family of proteins. This protein binds directly to the F-box motif found in F-box proteins. SCF complexes are involved in the regulated ubiquitination of specific protein substrates, which targets them for degradation by the proteasome. Specific F-box proteins recognize different target protein(s), and many specific SCF substrates have been identified including regulators of cell cycle progression and development. Studies have also characterized the protein as an RNA polymerase II elongation factor. Alternative splicing of this gene results in two transcript variants. A related pseudogene has been identified on chromosome 7. [provided by RefSeq]

Other Designations RNA polymerase II elongation factor-like protein OCP2|cyclin A/CDK2-associated p19|organ of Corti protein 2|transcription elongation factor B (SIII), polypeptide 1-like

Pathway

- [Cell cycle](#)

- [TGF-beta signaling pathway](#)
- [Ubiquitin mediated proteolysis](#)
- [Wnt signaling pathway](#)

Disease

- [Tobacco Use Disorder](#)