

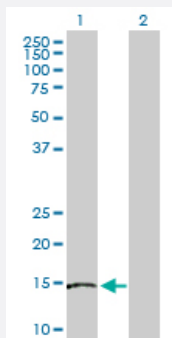
MaxPab®

# SKP1 purified MaxPab rabbit polyclonal antibody (D01P)

Catalog # H00006500-D01P

Size 100 ug

## Applications

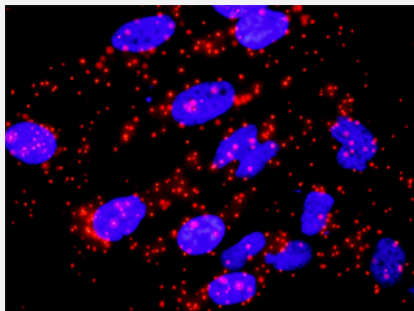


### Western Blot (Transfected lysate)

Western Blot analysis of SKP1 expression in transfected 293T cell line ([H00006500-T02](#)) by SKP1 MaxPab polyclonal antibody.

Lane 1: SKP1 transfected lysate(18.10 kDa).

Lane 2: Non-transfected lysate.



### In situ Proximity Ligation Assay (Cell)

Proximity Ligation Analysis of protein-protein interactions between SKP1 and CACYBP. HeLa cells were stained with anti-SKP1 rabbit purified polyclonal 1:1200 and anti-CACYBP mouse monoclonal antibody 1:50. Each red dot represents the detection of protein-protein interaction complex, and nuclei were counterstained with DAPI (blue).

## Specification

Product Description	Rabbit polyclonal antibody raised against a full-length human SKP1 protein.
Immunogen	SKP1 (NP_008861.2, 1 a.a. ~ 160 a.a) full-length human protein.
Sequence	MPSIKLQSSDGEIFEVDVEIAKQSVTIKTMLEDLGMDDEGDDDPVPLPNVNAAILKKVIQWCTHHK DDPPPPEDDENKEKRTDDIPVWDQEFLLKVDQGTLFELILAANYLDIKGLLDVTCKTVANMIKGKTP EEIRKTFNIKNDFTEEEEAQVGSTQFCL
Host	Rabbit
Reactivity	Human

Quality Control Testing	Antibody reactive against mammalian transfected lysate.
Storage Buffer	In 1x PBS, pH 7.4
Storage Instruction	Store at -20°C or lower. Aliquot to avoid repeated freezing and thawing.

## Applications

- Western Blot (Transfected lysate)

Western Blot analysis of SKP1 expression in transfected 293T cell line ([H00006500-T02](#)) by SKP1 MaxPab polyclonal antibody.

Lane 1: SKP1 transfected lysate(18.10 KDa).

Lane 2: Non-transfected lysate.

[Protocol Download](#)

- In situ* Proximity Ligation Assay (Cell)

Proximity Ligation Analysis of protein-protein interactions between SKP1 and CACYBP. HeLa cells were stained with anti-SKP1 rabbit purified polyclonal 1:1200 and anti-CACYBP mouse monoclonal antibody 1:50. Each red dot represents the detection of protein-protein interaction complex, and nuclei were counterstained with DAPI (blue).

## Gene Info — SKP1

Entrez GeneID	<a href="#">6500</a>
GeneBank Accession#	<a href="#">NM_006930.2</a>
Protein Accession#	<a href="#">NP_008861.2</a>
Gene Name	SKP1
Gene Alias	EMC19, MGC34403, OCP-II, OCP2, SKP1A, TCEB1L, p19A
Gene Description	S-phase kinase-associated protein 1
Omim ID	<a href="#">601434</a>
Gene Ontology	<a href="#">Hyperlink</a>

**Gene Summary**

This gene encodes a component of SCF complexes, which are composed of this protein, cullin 1, a ring-box protein, and one member of the F-box family of proteins. This protein binds directly to the F-box motif found in F-box proteins. SCF complexes are involved in the regulated ubiquitination of specific protein substrates, which targets them for degradation by the proteasome. Specific F-box proteins recognize different target protein(s), and many specific SCF substrates have been identified including regulators of cell cycle progression and development. Studies have also characterized the protein as an RNA polymerase II elongation factor. Alternative splicing of this gene results in two transcript variants. A related pseudogene has been identified on chromosome 7. [provided by RefSeq]

**Other Designations**

RNA polymerase II elongation factor-like protein OCP2|cyclin A/CDK2-associated p19|organ of Corti protein 2|transcription elongation factor B (SIII), polypeptide 1-like

**Pathway**

- [Cell cycle](#)
- [TGF-beta signaling pathway](#)
- [Ubiquitin mediated proteolysis](#)
- [Wnt signaling pathway](#)

**Disease**

- [Tobacco Use Disorder](#)