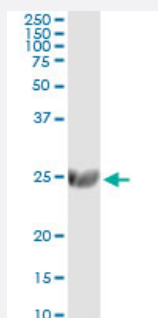


# ST6GAL1 monoclonal antibody (M01), clone 2E12

Catalog # H00006480-M01

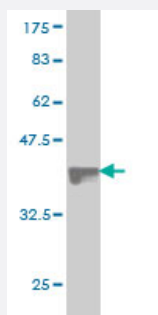
Size 100 ug

## Applications



### Immunoprecipitation

Immunoprecipitation of ST6GAL1 transfected lysate using anti-ST6GAL1 monoclonal antibody and Protein A Magnetic Bead, and immunoblotted with ST6GAL1 MaxPab rabbit polyclonal antibody.



Western Blot detection against Immunogen (36.74 KDa) .

## Specification

<b>Product Description</b>	Mouse monoclonal antibody raised against a partial recombinant ST6GAL1.
<b>Immunogen</b>	ST6GAL1 (NP_775323, 96 a.a. ~ 195 a.a) partial recombinant protein with GST tag. MW of the GST tag alone is 26 KDa.
<b>Sequence</b>	WNKDSSSKNLIPRLQKWKNYLSMNKYKVSYKGPGPGIKFSAEALRCHLRDHVNVSMVEVTDFFPNTSEWEGYLPKESIRTKAGPWGRCAVVSSAGSLKS
<b>Host</b>	Mouse
<b>Reactivity</b>	Human
<b>Isotype</b>	IgG2a Kappa

**Quality Control Testing**

Antibody Reactive Against Recombinant Protein.  
Western Blot detection against Immunogen (36.74 KDa) .

**Storage Buffer**

In 1x PBS, pH 7.4

**Storage Instruction**

Store at -20°C or lower. Aliquot to avoid repeated freezing and thawing.

## Applications

- Western Blot (Recombinant protein)

[Protocol Download](#)

- Immunoprecipitation

Immunoprecipitation of ST6GAL1 transfected lysate using anti-ST6GAL1 monoclonal antibody and Protein A Magnetic Bead, and immunoblotted with ST6GAL1 MaxPab rabbit polyclonal antibody.

[Protocol Download](#)

- ELISA

## Gene Info — ST6GAL1

**Entrez GeneID**

[6480](#)

**GeneBank Accession#**

[NM\\_173216](#)

**Protein Accession#**

[NP\\_775323](#)

**Gene Name**

ST6GAL1

**Gene Alias**

CD75, MGC48859, SIAT1, ST6GalI, ST6N

**Gene Description**

ST6 beta-galactosamide alpha-2,6-sialyltransferase 1

**Omim ID**

[109675](#)

**Gene Ontology**

[Hyperlink](#)

**Gene Summary**

This gene encodes a member of glycosyltransferase family 29. The encoded protein is a type II membrane protein that catalyzes the transfer of sialic acid from CMP-sialic acid to galactose-containing substrates. The protein, which is normally found in the Golgi but can be proteolytically processed to a soluble form, is involved in the generation of the cell-surface carbohydrate determinants and differentiation antigens HB-6, CD75, and CD76. This gene has been incorrectly referred to as CD75. Three transcript variants encoding two different isoforms have been described. [provided by RefSeq]

**Other Designations**

CMP-N-acetylneuraminate beta-galactosamide alpha-2,6-sialyltransferase|ST6Gal I|alpha 2,6-ST|sialyltransferase 1 (beta-galactoside alpha-2,6-sialyltransferase)|sialyltransferase 1 (beta-galactoside alpha-2,6-sialyltransferase)

## Pathway

- [Metabolic pathways](#)
- [N-Glycan biosynthesis](#)

## Disease

- [Tobacco Use Disorder](#)