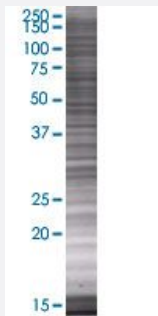


SHOX 293T Cell Transient Overexpression Lysate(Denatured)

Catalog # H00006473-T01

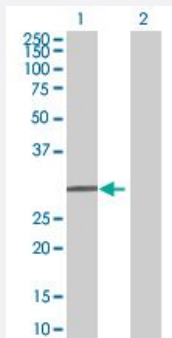
Size 100 uL

Applications



SDS-PAGE Gel

SHOX transfected lysate.



Western Blot

Lane 1: SHOX transfected lysate (24.86 KDa)

Lane 2: Non-transfected lysate.

Specification

Transfected Cell Line 293T

Plasmid pCMV-SHOX full-length

Host Human

Theoretical MW (kDa) 24.86

Quality Control Testing Transient overexpression cell lysate was tested with Anti-SHOX antibody ([H00006473-B01](#)) by Western Blots.
 SDS-PAGE Gel
 SHOX transfected lysate.
 Western Blot
 Lane 1: SHOX transfected lysate (24.86 KDa)
 Lane 2: Non-transfected lysate.

Storage Buffer

1X Sample Buffer (50 mM Tris-HCl, 2% SDS, 10% glycerol, 300 mM 2-mercaptoethanol, 0.01% Bromophenol blue)

Storage Instruction

Store at -80°C. Aliquot to avoid repeated freezing and thawing.

Applications

- Western Blot

Gene Info — SHOX

Entrez GeneID

[6473](#)

GeneBank Accession#

[NM_006883.2](#)

Protein Accession#

[NP_006874.1](#)

Gene Name

SHOX

Gene Alias

GCFX, PHOG, SHOXY, SS

Gene Description

short stature homeobox

Omim ID

[127300](#) [249700](#) [312865](#) [400020](#) [604271](#)

Gene Ontology

[Hyperlink](#)

Gene Summary

This gene belongs to the paired homeobox family and is located in the pseudoautosomal region 1 (PAR1) of X and Y chromosomes. Defects in this gene are associated with idiopathic growth retardation and in the short stature phenotype of Turner syndrome patients. This gene is highly conserved across species from mammals to fish to flies. Alternatively spliced transcript variants encoding different isoforms have been noted for this gene. [provided by RefSeq]

Other Designations

OTTHUMP00000022821|OTTHUMP00000022822|growth control factor, X-linked|pseudoautosomal homeobox-containing osteogenic

Disease

- [Growth Disorders](#)