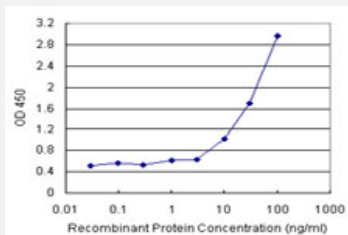


SGTA (Human) Matched Antibody Pair

Catalog # H00006449-AP11

Size 1 Set

Applications



Sandwich ELISA detection sensitivity ranging from 1 ng/ml to 100 ng/ml.

Specification

Product Description	This antibody pair set comes with a matched antibody pair to detect and quantify the protein level of human SGTA.
Reactivity	Human
Interspecies Antigen Sequence	Mouse (88%); Rat (88%)
Quality Control Testing	Standard curve using recombinant protein (H00006449-P01) as an analyte. Sandwich ELISA detection sensitivity ranging from 1 ng/ml to 100 ng/ml.
Supplied Product	Antibody pair set content: 1. Capture antibody: rabbit MaxPab® affinity purified polyclonal anti-SGTA (100 ug) 2. Detection antibody: mouse monoclonal anti-SGTA, IgG2b Kappa (20 ug) *Reagents are sufficient for at least 1-2 x 96 well plates using recommended protocols.
Storage Instruction	Store reagents of the antibody pair set at -20°C or lower. Please aliquot to avoid repeated freeze thaw cycle. Reagents should be returned to -20°C storage immediately after use.

Applications

- ELISA Pair (Recombinant protein)

[Protocol Download](#)

Gene Info — SGTA

Entrez GeneID	6449
Gene Name	SGTA
Gene Alias	SGT, alphaSGT, hSGT
Gene Description	small glutamine-rich tetratricopeptide repeat (TPR)-containing, alpha
Omim ID	603419
Gene Ontology	Hyperlink
Gene Summary	This gene encodes a protein which is capable of interacting with the major nonstructural protein of parvovirus H-1 and 70-kDa heat shock cognate protein; however, its function is not known. Since this transcript is expressed ubiquitously in various tissues, this protein may serve a housekeeping function. [provided by RefSeq]
Other Designations	protein containing three tetratricopeptide repeats small glutamine-rich tetratricopeptide

Disease

- [Insulin Resistance](#)
- [Polycystic Ovary Syndrome](#)