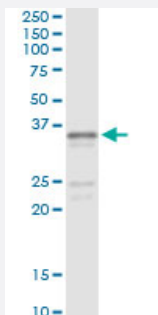


SGCG (Human) IP-WB Antibody Pair

Catalog # H00006445-PW2

Size 1 Set

Applications



Immunoprecipitation of SGCG transfected lysate using mouse monoclonal anti-SGCG and Protein A Magnetic Bead ([U0007](#)), and immunoblotted with rabbit polyclonal anti-SGCG.

Specification

Product Description	This IP-WB antibody pair set comes with one antibody for immunoprecipitation and another to detect the precipitated protein in western blot.
Reactivity	Human
Quality Control Testing	Immunoprecipitation-Western Blot (IP-WB) Immunoprecipitation of SGCG transfected lysate using mouse monoclonal anti-SGCG and Protein A Magnetic Bead (U0007), and immunoblotted with rabbit polyclonal anti-SGCG.
Supplied Product	Antibody pair set content: 1. Antibody pair for IP: mouse monoclonal anti-SGCG (300 ug) 2. Antibody pair for WB: rabbit polyclonal anti-SGCG (50 ul)
Storage Instruction	Store reagents of the antibody pair set at -20°C or lower. Please aliquot to avoid repeated freeze thaw cycle. Reagents should be returned to -20°C storage immediately after use.

Applications

- Immunoprecipitation-Western Blot

[Protocol Download](#)

Gene Info — SGCG

Entrez GeneID	6445
Gene Name	SGCG
Gene Alias	A4, DAGA4, DMDA, DMDA1, LGMD2C, MAM, MGC130048, SCARMD2, SCG3, TYPE
Gene Description	sarcoglycan, gamma (35kDa dystrophin-associated glycoprotein)
Omim ID	253700 608896
Gene Ontology	Hyperlink
Gene Summary	<p>This gene encodes gamma-sarcoglycan, one of several sarcolemmal transmembrane glycoproteins that interact with dystrophin. The dystrophin-glycoprotein complex (DGC) spans the sarcolemma and is comprised of dystrophin, syntrophin, alpha- and beta-dystroglycans and sarcoglycans. The DGC provides a structural link between the subsarcolemmal cytoskeleton and the extracellular matrix of muscle cells. Defects in the encoded protein can lead to early onset autosomal recessive muscular dystrophy, in particular limb-girdle muscular dystrophy, type 2C (LGMD2C). [provided by RefSeq]</p>
Other Designations	35kD dystrophin-associated glycoprotein OTTHUMP00000018112 gamma sarcoglycan sarcoglycan, gamma (35kD dystrophin-associated glycoprotein)

Pathway

- [Arrhythmogenic right ventricular cardiomyopathy \(ARVC\)](#)
- [Hypertrophic cardiomyopathy \(HCM\)](#)

Disease

- [Muscular Dystrophies](#)
- [Tobacco Use Disorder](#)