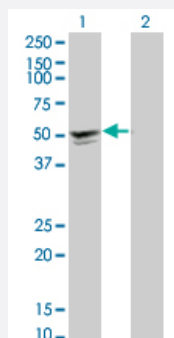


# SGCA monoclonal antibody (M01), clone 3C4

Catalog # H00006442-M01

Size 100 ug

## Applications

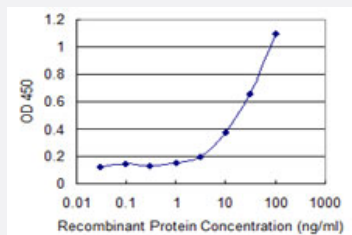


### Western Blot (Transfected lysate)

Western Blot analysis of SGCA expression in transfected 293T cell line by SGCA monoclonal antibody (M01), clone 3C4.

Lane 1: SGCA transfected lysate (42.9 kDa).

Lane 2: Non-transfected lysate.



### Sandwich ELISA (Recombinant protein)

Detection limit for recombinant GST tagged SGCA is 1 ng/ml as a capture antibody.



Western Blot detection against Immunogen (37.62 kDa).

## Specification

### Product Description

Mouse monoclonal antibody raised against a partial recombinant SGCA.

<b>Immunogen</b>	SGCA (NP_000014.1, 26 a.a. ~ 133 a.a) partial recombinant protein with GST tag. MW of the GST tag alone is 26 KDa.
<b>Sequence</b>	TTLHPLVGRVVFVHTLDHETFLSLPEHVAVPPAVHITYHAHLQGHDPDLPRWLRYTQRSPHHPGFLYG SATPEDRGLQVIEVTAYNRDSFDTTQRQLVLEIGDPEGPLLP
<b>Host</b>	Mouse
<b>Reactivity</b>	Human
<b>Interspecies Antigen Sequence</b>	Mouse (85); Rat (84)
<b>Isotype</b>	IgG2b Kappa
<b>Quality Control Testing</b>	Antibody Reactive Against Recombinant Protein. Western Blot detection against Immunogen (37.62 KDa) .
<b>Storage Buffer</b>	In 1x PBS, pH 7.4
<b>Storage Instruction</b>	Store at -20°C or lower. Aliquot to avoid repeated freezing and thawing.

## Applications

- Western Blot (Transfected lysate)

Western Blot analysis of SGCA expression in transfected 293T cell line by SGCA monoclonal antibody (M01), clone 3C4.

Lane 1: SGCA transfected lysate(42.9 KDa).

Lane 2: Non-transfected lysate.

[Protocol Download](#)

- Western Blot (Recombinant protein)

[Protocol Download](#)

- Sandwich ELISA (Recombinant protein)

Detection limit for recombinant GST tagged SGCA is 1 ng/ml as a capture antibody.

[Protocol Download](#)

- ELISA

## Gene Info — SGCA

Entrez GeneID	<a href="#">6442</a>
GeneBank Accession#	<a href="#">NM_000023</a>
Protein Accession#	<a href="#">NP_000014.1</a>
Gene Name	SGCA
Gene Alias	50-DAG, A2, ADL, DAG2, DMDA2, LGMD2D, SCARMD1, adhalin
Gene Description	sarcoglycan, alpha (50kDa dystrophin-associated glycoprotein)
Omim ID	<a href="#">600119</a> <a href="#">608099</a>
Gene Ontology	<a href="#">Hyperlink</a>
Gene Summary	This gene encodes a component of the dystrophin-glycoprotein complex (DGC), which is critical to the stability of muscle fiber membranes and to the linking of the actin cytoskeleton to the extracellular matrix. Its expression is thought to be restricted to striated muscle. Mutations in this gene result in type 2D autosomal recessive limb-girdle muscular dystrophy. Multiple transcript variants encoding different isoforms have been found for this gene. [provided by RefSeq]
Other Designations	50kD DAG sarcoglycan, alpha

## Pathway

- [Arrhythmogenic right ventricular cardiomyopathy \(ARVC\)](#)
- [Hypertrophic cardiomyopathy \(HCM\)](#)