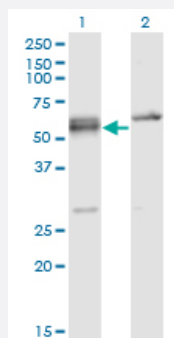


SFRS6 monoclonal antibody (M02), clone 5G6

Catalog # H00006431-M02

Size 100 ug

Applications

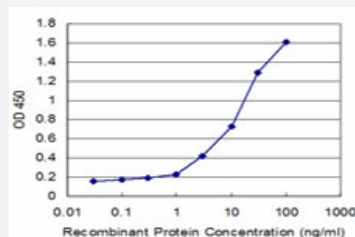


Western Blot (Transfected lysate)

Western Blot analysis of SFRS6 expression in transfected 293T cell line by SFRS6 monoclonal antibody (M02), clone 5G6.

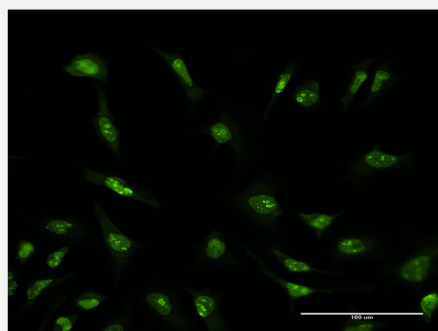
Lane 1: SFRS6 transfected lysate (39.6 KDa).

Lane 2: Non-transfected lysate.



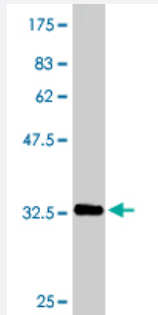
Sandwich ELISA (Recombinant protein)

Detection limit for recombinant GST tagged SFRS6 is approximately 0.3 ng/ml as a capture antibody.



Immunofluorescence

Immunofluorescence of monoclonal antibody to SFRS6 on HeLa cell . [antibody concentration 10 ug/ml]



Western Blot detection against Immunogen (33.99 KDa) .

Specification

Product Description	Mouse monoclonal antibody raised against a partial recombinant SFRS6.
Immunogen	SFRS6 (NP_006266, 1 a.a. ~ 75 a.a) partial recombinant protein with GST tag. MW of the GST tag alone is 26 KDa.
Sequence	MPRVYIGRLSYNVREKDIQRFFSGYGRLLVDLKNYG FVEFEDSRDADDAVYELNGKELCGERV VEHARGPRR
Host	Mouse
Reactivity	Human
Interspecies Antigen Sequence	Mouse (97); Rat (97)
Isotype	IgG2b Kappa
Quality Control Testing	Antibody Reactive Against Recombinant Protein. Western Blot detection against Immunogen (33.99 KDa) .
Storage Buffer	In 1x PBS, pH 7.4
Storage Instruction	Store at -20°C or lower. Aliquot to avoid repeated freezing and thawing.

Applications

● Western Blot (Transfected lysate)

Western Blot analysis of SFRS6 expression in transfected 293T cell line by SFRS6 monoclonal antibody (M02), clone 5G6.

Lane 1: SFRS6 transfected lysate(39.6 KDa).

Lane 2: Non-transfected lysate.

[Protocol Download](#)

- Western Blot (Recombinant protein)

[Protocol Download](#)

- Sandwich ELISA (Recombinant protein)

Detection limit for recombinant GST tagged SFRS6 is approximately 0.3ng/ml as a capture antibody.

[Protocol Download](#)

- ELISA

- Immunofluorescence

Immunofluorescence of monoclonal antibody to SFRS6 on HeLa cell . [antibody concentration 10 ug/ml]

Gene Info — SFRS6

Entrez GeneID	6431
GeneBank Accession#	NM_006275
Protein Accession#	NP_006266
Gene Name	SFRS6
Gene Alias	B52, FLJ08061, MGC5045, SRP55
Gene Description	splicing factor, arginine/serine-rich 6
Omim ID	601944
Gene Ontology	Hyperlink
Gene Summary	The protein encoded by this gene is involved in mRNA splicing and may play a role in the determination of alternative splicing. The encoded nuclear protein belongs to the splicing factor SR family and has been shown to bind with and modulate another member of the family, SFRS12. [provided by RefSeq]
Other Designations	OTTHUMP00000031020 arginine/serine-rich splicing factor 6 pre-mRNA splicing factor SRP55 splicing factor, arginine/serine-rich, 55 kDa

Disease

- [Cardiovascular Diseases](#)

- [Diabetes Mellitus](#)
- [Edema](#)