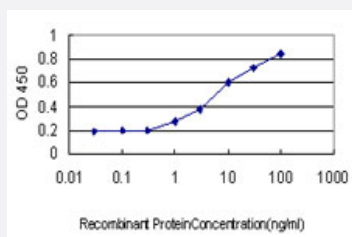


SFRS6 monoclonal antibody (M01), clone 6A10

Catalog # H00006431-M01

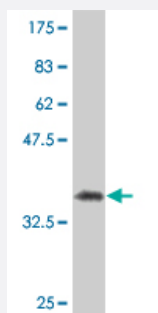
Size 100 ug

Applications



Sandwich ELISA (Recombinant protein)

Detection limit for recombinant GST tagged SFRS6 is approximately 1ng/ml as a capture antibody.



Western Blot detection against Immunogen (33.99 KDa) .

Specification

Product Description

Mouse monoclonal antibody raised against a partial recombinant SFRS6.

Immunogen

SFRS6 (NP_006266, 1 a.a. ~ 75 a.a) partial recombinant protein with GST tag. MW of the GST tag alone is 26 KDa.

Sequence

MPRVYIGRLSYNVREKDIQRFFSGYGRLLVDLKNYGFVEFEDSRDADDAVYELNGKELCGERV
VEHARGPRR

Host

Mouse

Reactivity

Human

Interspecies Antigen Sequence

Mouse (97); Rat (97)

Isotype

IgG3 Kappa

Quality Control Testing

Antibody Reactive Against Recombinant Protein.
Western Blot detection against Immunogen (33.99 KDa) .

Storage Buffer

In 1x PBS, pH 7.4

Storage Instruction

Store at -20°C or lower. Aliquot to avoid repeated freezing and thawing.

Applications

- Western Blot (Recombinant protein)

[Protocol Download](#)

- Sandwich ELISA (Recombinant protein)

Detection limit for recombinant GST tagged SFRS6 is approximately 1ng/ml as a capture antibody.

[Protocol Download](#)

- ELISA

Gene Info — SFRS6

Entrez GeneID[6431](#)**GeneBank Accession#**[NM_006275](#)**Protein Accession#**[NP_006266](#)**Gene Name**

SFRS6

Gene Alias

B52, FLJ08061, MGC5045, SRP55

Gene Description

splicing factor, arginine/serine-rich 6

Omim ID[601944](#)**Gene Ontology**[Hyperlink](#)

Gene Summary

The protein encoded by this gene is involved in mRNA splicing and may play a role in the determination of alternative splicing. The encoded nuclear protein belongs to the splicing factor SR family and has been shown to bind with and modulate another member of the family, SFRS12. [provided by RefSeq]

Other Designations

OTTHUMP00000031020|arginine/serine-rich splicing factor 6|pre-mRNA splicing factor SRP55|splicing factor, arginine/serine-rich, 55 kDa

Disease

- [Cardiovascular Diseases](#)
- [Diabetes Mellitus](#)
- [Edema](#)