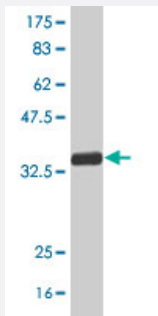


SFRS6 polyclonal antibody (A01)

Catalog # H00006431-A01

Size 50 uL

Applications



Western Blot detection against Immunogen (34.36 KDa) .

Specification

Product Description	Mouse polyclonal antibody raised against a partial recombinant SFRS6.
Immunogen	SFRS6 (NP_006266, 1 a.a. ~ 75 a.a) partial recombinant protein with GST tag.
Sequence	MPRVYIGRLSYNVREKDIQRFFSGYGRLLLEVDLKNYGFVEFEDSRDADDAVYELNGKELCGERV MEHARGPRR
Host	Mouse
Reactivity	Human
Interspecies Antigen Sequence	Mouse (97); Rat (97)
Quality Control Testing	Antibody Reactive Against Recombinant Protein. Western Blot detection against Immunogen (34.36 KDa) .
Storage Buffer	50 % glycerol
Storage Instruction	Store at -20°C or lower. Aliquot to avoid repeated freezing and thawing.

Applications

- Western Blot (Recombinant protein)

[Protocol Download](#)

- ELISA

Gene Info — SFRS6

Entrez GeneID [6431](#)

GeneBank Accession# [NM_006275](#)

Protein Accession# [NP_006266](#)

Gene Name SFRS6

Gene Alias B52, FLJ08061, MGC5045, SRP55

Gene Description splicing factor, arginine/serine-rich 6

Omim ID [601944](#)

Gene Ontology [Hyperlink](#)

Gene Summary The protein encoded by this gene is involved in mRNA splicing and may play a role in the determination of alternative splicing. The encoded nuclear protein belongs to the splicing factor SR family and has been shown to bind with and modulate another member of the family, SFRS12. [provided by RefSeq]

Other Designations OTTHUMP00000031020|arginine/serine-rich splicing factor 6|pre-mRNA splicing factor SRP55|splicing factor, arginine/serine-rich, 55 kDa

Disease

- [Cardiovascular Diseases](#)
- [Diabetes Mellitus](#)
- [Edema](#)